

For Research Use Only

RYR2 Polyclonal antibody

Catalog Number: 19765-1-AP

28 Publications



Basic Information

Catalog Number:

19765-1-AP

Size:

450 ug/ml

Source:

Rabbit

Isotype:

IgG

GenBank Accession Number:

NM_001035

GeneID (NCBI):

6262

UNIPROT ID:

Q92736

Full Name:

ryanodine receptor 2 (cardiac)

Calculated MW:

565 kDa

Purification Method:

Antigen affinity purification

Recommended Dilutions:

WB 1:1000-1:6000

IHC 1:100-1:400

IF-P 1:50-1:500

IF/ICC 1:50-1:500

Applications

Tested Applications:

WB, IHC, IF/ICC, IF-P, ELISA

Cited Applications:

WB, IHC, IF

Species Specificity:

human, mouse, rat

Cited Species:

human, mouse, rat

Positive Controls:

WB : mouse heart tissue, rat heart tissue

IHC : human heart tissue, human brain tissue, human placenta tissue, human skeletal muscle tissue

IF-P : mouse heart tissue,

IF/ICC : HEK-293 cells,

Note-IHC: suggested antigen retrieval with TE buffer pH 9.0; (*) Alternatively, antigen retrieval may be performed with citrate buffer pH 6.0

Background Information

RYR2 belongs to the ryanodine receptor family. RYR2 provides communication between transverse-tubules and sarcoplasmic reticulum. Contraction of cardiac muscle is triggered by release of calcium ions from SR following depolarization of T-tubules. Defects in RYR2 are the cause of familial arrhythmogenic right ventricular dysplasia type 2 (ARVD2) which known as arrhythmogenic right ventricular cardiomyopathy 2 (ARVC2). Defects in RYR2 are the cause of catecholaminergic polymorphic ventricular tachycardia type 1 (CPVT1) which known as stress-induced polymorphic ventricular tachycardia (VTSIP). This antibody detects a band at ~250 kDa which has been reported (PMID: 22962011).

Notable Publications

Author	Pubmed ID	Journal	Application
Yung-Hsin Yeh	27562817	Basic Res Cardiol	WB
Wei-Jan Chen	31419440	J Mol Cell Cardiol	WB
Piplu Bhuiyan	39651126	bioRxiv	WB

Storage

Storage:

Store at -20°C. Stable for one year after shipment.

Storage Buffer:

PBS with 0.02% sodium azide and 50% glycerol pH 7.3.

Aliquoting is unnecessary for -20°C storage

For technical support and original validation data for this product please contact:

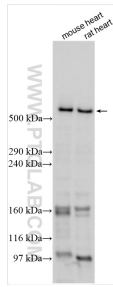
T: 4006900926

E: Proteintech-CN@ptglab.com

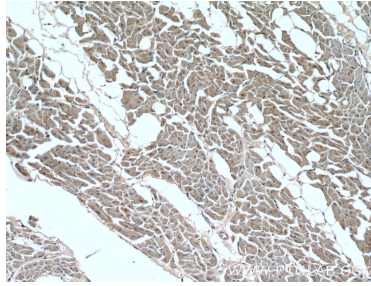
W: ptgcn.com

This product is exclusively available under Proteintech Group brand and is not available to purchase from any other manufacturer.

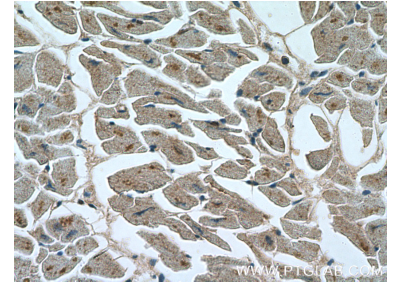
Selected Validation Data



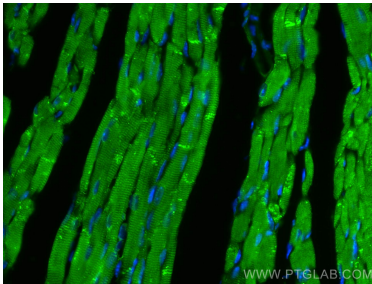
Various lysates were subjected to SDS PAGE followed by western blot with 19765-1-AP (RYR2 antibody) at dilution of 1:3000 incubated at room temperature for 1.5 hours.



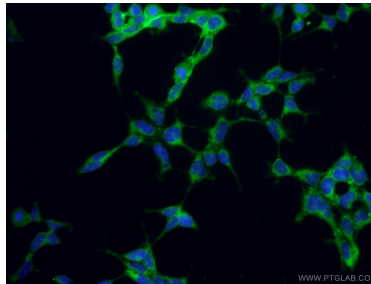
Immunohistochemical analysis of paraffin-embedded human heart tissue slide using 19765-1-AP (Ryanodine Receptor 2 antibody at dilution of 1:200 (under 10x lens).



Immunohistochemical analysis of paraffin-embedded human heart tissue slide using 19765-1-AP (Ryanodine Receptor 2 antibody at dilution of 1:200 (under 40x lens).



Immunofluorescent analysis of (4% PFA) fixed mouse heart tissue using RYR2 antibody (19765-1-AP) at dilution of 1:200 and CoraLite®488-Conjugated AffiniPure Goat Anti-Rabbit IgG(H+L).



Immunofluorescent analysis of (-20°C Ethanol) fixed HEK-293 cells using 19765-1-AP (Ryanodine Receptor 2 antibody) at dilution of 1:50 and Alexa Fluor 488-conjugated AffiniPure Goat Anti-Rabbit IgG(H+L).