

For Research Use Only

# LATH Polyclonal antibody

Catalog Number: 19763-1-AP



## Basic Information

Catalog Number:

19763-1-AP

Size:

650 µg/ml

Source:

Rabbit

Isotype:

IgG

GenBank Accession Number:

AY180924

GeneID (NCBI):

317716

Full Name:

breast cancer and salivary gland  
expression gene

Calculated MW:

19 kDa

Purification Method:

Antigen affinity purification

Recommended Dilutions:

IHC 1:20-1:200

## Applications

Tested Applications:

IHC, ELISA

Species Specificity:

human

Positive Controls:

IHC : human breast cancer tissue,

**Note-IHC: suggested antigen retrieval with  
TE buffer pH 9.0; (\*) Alternatively, antigen  
retrieval may be performed with citrate  
buffer pH 6.0**

## Background Information

LATH, also named as BASE, belongs to the BPI/LBP/Plunc superfamily and Plunc family. It is the major protein in sweat, has surfactant properties.

## Storage

Storage:

Store at -20°C. Stable for one year after shipment.

Storage Buffer:

PBS with 0.02% sodium azide and 50% glycerol pH 7.3.

Aliquoting is unnecessary for -20°C storage

For technical support and original validation data for this product please contact:

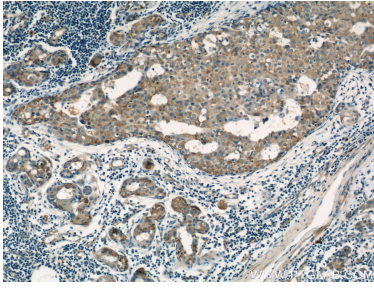
T: 4006900926

E: [Proteintech-CN@ptglab.com](mailto:Proteintech-CN@ptglab.com)

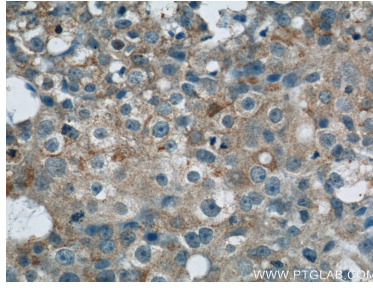
W: [ptgcn.com](http://ptgcn.com)

This product is exclusively available under Proteintech Group brand and is not available to purchase from any other manufacturer.

## Selected Validation Data



Immunohistochemical analysis of paraffin-embedded human breast cancer using 19763-1-AP (LATH antibody) at dilution of 1:50 (under 10x lens).



Immunohistochemical analysis of paraffin-embedded human breast cancer using 19763-1-AP (LATH antibody) at dilution of 1:50 (under 40x lens).