

SLK Polyclonal antibody

Catalog Number: 19743-1-AP

Basic Information

Catalog Number:

19743-1-AP

Size:

1200 µg/ml

Source:

Rabbit

Isotype:

IgG

GenBank Accession Number:

NM_014720

GeneID (NCBI):

9748

UNIPROT ID:

Q9H2G2

Full Name:

STE20-like kinase (yeast)

Calculated MW:

143 kDa

Observed MW:

143-160 kDa, 210-220 kDa

Purification Method:

Antigen affinity purification

Recommended Dilutions:

WB 1:500-1:3000

IF/ICC 1:50-1:500

Applications

Tested Applications:

WB, IF/ICC, ELISA

Species Specificity:

human, mouse

Positive Controls:

WB : HEK-293 cells, human brain tissue, MCF-7 cells, mouse liver tissue, HeLa cells, THP-1 cells

IF/ICC : HepG2 cells,

Background Information

SLK, also named as KIAA0204 and STK2, belongs to the protein kinase superfamily, STE Ser/Thr protein kinase family and STE20 subfamily. SLK plays an important role in cell proliferation and cytoskeletal remodeling. In fibroblasts, SLK has been shown to respond to FAK/Src signaling and regulate focal adhesion turnover through Paxillin phosphorylation. Full-length SLK (~220 kDa) has also been shown to be essential for embryonic development. In myoblasts, the overexpression of a dominant negative SLK is sufficient to block myoblast fusion. (PMID: 28153048, PMID: 25882817, PMID: 23815977)

Storage

Storage:

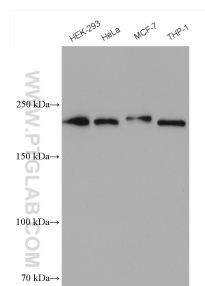
Store at -20°C. Stable for one year after shipment.

Storage Buffer:

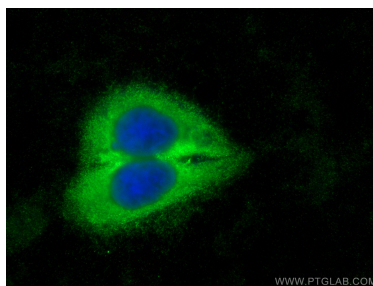
PBS with 0.02% sodium azide and 50% glycerol pH 7.3.

Aliquoting is unnecessary for -20°C storage

Selected Validation Data



Various lysates were subjected to SDS PAGE followed by western blot with 19743-1-AP (SLK antibody) at dilution of 1:1500 incubated at room temperature for 1.5 hours.



Immunofluorescent analysis of (-20°C Ethanol) fixed HepG2 cells using SLK antibody (19743-1-AP) at dilution of 1:200 and CoraLite® 488-Conjugated AffiniPure Goat Anti-Rabbit IgG(H+L) (SA00013-2).