

For Research Use Only

STATH Polyclonal antibody

Catalog Number: 19724-1-AP

2 Publications



Basic Information

Catalog Number:

19724-1-AP

Size:

350 µg/ml

Source:

Rabbit

Isotype:

IgG

GenBank Accession Number:

NM_003154

GeneID (NCBI):

6779

UNIPROT ID:

P02808

Full Name:

statherin

Calculated MW:

7 kDa

Observed MW:

7 kDa

Purification Method:

Antigen affinity purification

Recommended Dilutions:

WB 1:2000-1:10000

Applications

Tested Applications:

WB, ELISA

Cited Applications:

WB

Species Specificity:

human, mouse

Cited Species:

human

Positive Controls:

WB : human saliva, mouse pancreas tissue

Background Information

STATH belongs to the histatin/statherin family. STATH is a salivary protein that stabilizes saliva supersaturated with calcium salts by inhibiting the precipitation of calcium phosphate salts. It also modulates hydroxyapatite crystal formation on the tooth surface.

Notable Publications

Author	Pubmed ID	Journal	Application
Masahiro Izumi	25793156	BBA Clin	WB
Catherine O Brown	38173363	J Forensic Sci	

Storage

Storage:

Store at -20°C. Stable for one year after shipment.

Storage Buffer:

PBS with 0.02% sodium azide and 50% glycerol pH 7.3.

Aliquoting is unnecessary for -20°C storage

For technical support and original validation data for this product please contact:

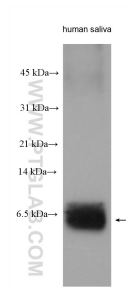
T: 4006900926

E: Proteintech-CN@ptglab.com

W: ptgcn.com

This product is exclusively available under Proteintech Group brand and is not available to purchase from any other manufacturer.

Selected Validation Data



human saliva were subjected to SDS PAGE followed by western blot with 19724-1-AP (STATH antibody) at dilution of 1:5000 incubated at room temperature for 1.5 hours.