

For Research Use Only

persephin-Specific Polyclonal antibody



Catalog Number: 19713-1-AP

1 Publications

Basic Information

Catalog Number:

19713-1-AP

Size:

600 µg/ml

Source:

Rabbit

Isotype:

IgG

GenBank Accession Number:

NM_004158

GeneID (NCBI):

5623

UNIPROT ID:

O60542

Full Name:

persephin

Calculated MW:

17 kDa

Observed MW:

17 kDa

Purification Method:

Antigen affinity purification

Recommended Dilutions:

WB 1:500-1:1000

IHC 1:20-1:200

IF 1:50-1:500

Applications

Tested Applications:

IF/ICC, IHC, WB, ELISA

Cited Applications:

WB

Species Specificity:

human

Note-IHC: suggested antigen retrieval with TE buffer pH 9.0; (*) Alternatively, antigen retrieval may be performed with citrate buffer pH 6.0

Positive Controls:

WB : SH-SY5Y cells, HepG2 cells

IHC : human brain tissue,

IF : SH-SY5Y cells,

Background Information

PSPN, also named as PSP, belongs to the TGF-beta family and GDNF subfamily. PSPN exhibits neurotrophic activity on mesencephalic dopaminergic and motor neurons. The antibody is specific to PSPN.

Notable Publications

Author	Pubmed ID	Journal	Application
Kathryn Stein	28248428	Biol Cell	WB

Storage

Storage:

Store at -20°C. Stable for one year after shipment.

Storage Buffer:

PBS with 0.02% sodium azide and 50% glycerol pH 7.3.

Aliquoting is unnecessary for -20°C storage

For technical support and original validation data for this product please contact:

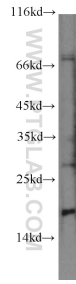
T: 4006900926

E: Proteintech-CN@ptglab.com

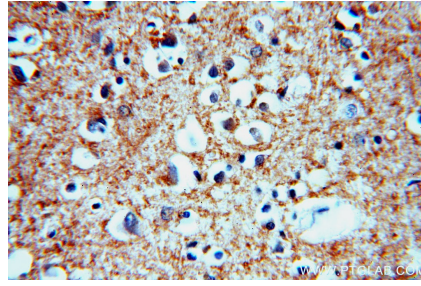
W: ptgcn.com

This product is exclusively available under Proteintech Group brand and is not available to purchase from any other manufacturer.

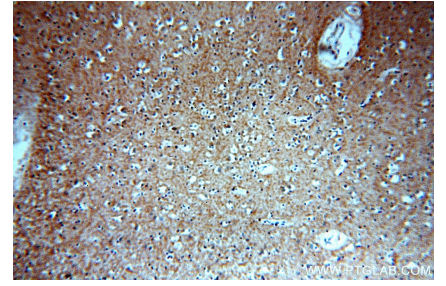
Selected Validation Data



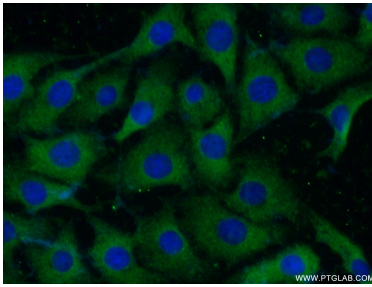
SH-SY5Y cells were subjected to SDS PAGE followed by western blot with 19713-1-AP (persephin-Specific antibody) at dilution of 1:500 incubated at room temperature for 1.5 hours.



Immunohistochemical analysis of paraffin-embedded human brain using 19713-1-AP (persephin-Specific antibody) at dilution of 1:50 (under 40x lens).



Immunohistochemical analysis of paraffin-embedded human brain using 19713-1-AP (persephin-Specific antibody) at dilution of 1:50 (under 10x lens).



Immunofluorescent analysis of (-20°C Ethanol) fixed SH-SY5Y cells using 19713-1-AP (persephin-Specific antibody) at dilution of 1:50 and Alexa Fluor 488-conjugated AffiniPure Goat Anti-Rabbit IgG(H+L).