

For Research Use Only

NEB-Specific Polyclonal antibody

Catalog Number: 19706-1-AP **2 Publications**



Basic Information

Catalog Number: 19706-1-AP	GenBank Accession Number: NM_004543	Purification Method: Antigen affinity purification
Size: 450 µg/ml	GeneID (NCBI): 4703	Recommended Dilutions: IHC 1:20-1:200
Source: Rabbit	UNIPROT ID: P20929	
Isotype: IgG	Full Name: nebulin	
	Calculated MW: 773 kDa	

Applications

Tested Applications: IHC, ELISA	Positive Controls: IHC : human skeletal muscle tissue,
Cited Applications: WB	
Species Specificity: human, mouse, rat	
Cited Species: human, mouse	
Note-IHC: suggested antigen retrieval with TE buffer pH 9.0; (*) Alternatively, antigen retrieval may be performed with citrate buffer pH 6.0	

Background Information

NEB, a giant muscle protein, may be involved in maintaining the structural integrity of sarcomeres and the membrane system associated with the myofibrils. NEB binds and stabilizes F-actin. Defects in NEB are the cause of nemaline myopathy type 2 (NEM2). The antibody is specific to NEB.

Notable Publications

Author	Pubmed ID	Journal	Application
Ankit Garg	24960163	J Clin Invest	WB
Andres Ramirez-Martinez	28826497	Elife	WB

Storage

Storage:
Store at -20°C. Stable for one year after shipment.
Storage Buffer:
PBS with 0.02% sodium azide and 50% glycerol pH 7.3.
Aliquoting is unnecessary for -20°C storage

For technical support and original validation data for this product please contact:

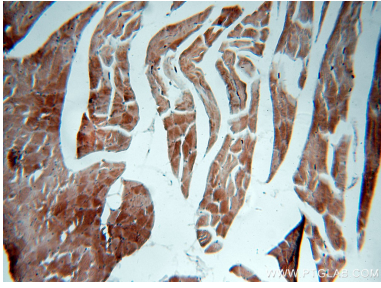
T: 4006900926

E: Proteintech-CN@ptglab.com

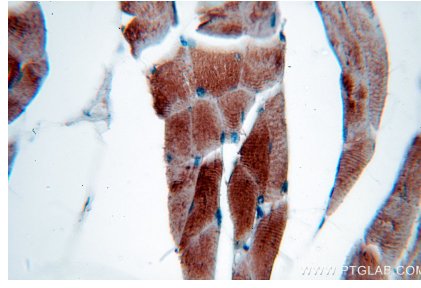
W: ptgcn.com

This product is exclusively available under Proteintech Group brand and is not available to purchase from any other manufacturer.

Selected Validation Data



Immunohistochemical analysis of paraffin-embedded human skeletal muscle using 19706-1-AP (NEB-Specific antibody) at dilution of 1:50 (under 10x lens).



Immunohistochemical analysis of paraffin-embedded human skeletal muscle using 19706-1-AP (NEB-Specific antibody) at dilution of 1:50 (under 40x lens).