

For Research Use Only

# ND2 Polyclonal antibody

Catalog Number: 19704-1-AP

Featured Product

25 Publications



## Basic Information

**Catalog Number:**

19704-1-AP

**Size:**

500 µg/ml

**Source:**

Rabbit

**Isotype:**

IgG

**GenBank Accession Number:**

GQ398480

**GeneID (NCBI):**

4536

**UNIPROT ID:**

P03891

**Full Name:**

NADH dehydrogenase, subunit 2 (complex I)

**Calculated MW:**

39 kDa

**Observed MW:**

42-44 kDa

**Purification Method:**

Antigen affinity purification

**Recommended Dilutions:**

WB 1:500-1:1000

## Applications

**Tested Applications:**

WB, ELISA

**Cited Applications:**

WB, IHC

**Species Specificity:**

human, mouse

**Cited Species:**

human, rat, mouse

**Positive Controls:**

WB : mouse liver tissue,

## Background Information

ND2, also named as MTND2, NADH2 and ND2, belongs to the complex I subunit 2 family. ND2 is a core subunit of the mitochondrial membrane respiratory chain NADH dehydrogenase (Complex I) that is believed to belong to the minimal assembly required for catalysis. Complex I functions in the transfer of electrons from NADH to the respiratory chain. The immediate electron acceptor for the enzyme is believed to be ubiquinone.

## Notable Publications

Author	Pubmed ID	Journal	Application
Ying Shu	36314841	EMBO J	WB
Alex Gallinat	36341940	Free Radic Biol Med	WB
Jing Zhang	26492917	EMBO J	WB

## Storage

**Storage:**

Store at -20°C. Stable for one year after shipment.

**Storage Buffer:**

PBS with 0.02% sodium azide and 50% glycerol pH 7.3.

Aliquoting is unnecessary for -20°C storage

For technical support and original validation data for this product please contact:

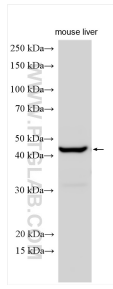
T: 4006900926

E: Proteintech-CN@ptglab.com

W: ptgcn.com

**This product is exclusively available under Proteintech Group brand and is not available to purchase from any other manufacturer.**

## Selected Validation Data



mouse liver tissue were subjected to SDS PAGE followed by western blot with 19704-1-AP (ND2 antibody) at dilution of 1:800 incubated at room temperature for 1.5 hours.