

For Research Use Only

# CYP4F3 Polyclonal antibody, PBS Only

Catalog Number:19701-1-PBS



## Basic Information

Catalog Number:

19701-1-PBS

Source:

Rabbit

Isotype:

IgG

GenBank Accession Number:

NM\_000896

GeneID (NCBI):

4051

UNIPROT ID:

Q08477

Full Name:

cytochrome P450, family 4, subfamily F, polypeptide 3

Calculated MW:

60 kDa

Observed MW:

60 kDa

Purification Method:

Antigen affinity purification

## Applications

Tested Applications:

WB, IHC, Indirect ELISA

Species Specificity:

human

## Background Information

CYP4F3, also named as LTB4H and CYP11B3, belongs to the cytochrome P450 family. Cytochromes P450 are a group of heme-thiolate monooxygenases. CYP4F3 requires molecular oxygen and NADPH for the omega-hydroxylation of LTB4, a potent chemoattractant for polymorphonuclear Leukocytes.

## Storage

Storage:

Store at -80°C.

The product is shipped with ice packs. Upon receipt, store it immediately at -80°C

Storage Buffer:

PBS only, pH7.3

For technical support and original validation data for this product please contact:

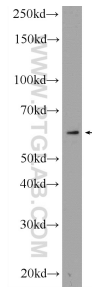
T: 4006900926

E: [Proteintech-CN@ptglab.com](mailto:Proteintech-CN@ptglab.com)

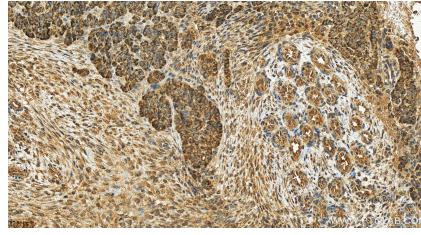
W: [ptgcn.com](http://ptgcn.com)

This product is exclusively available under Proteintech Group brand and is not available to purchase from any other manufacturer.

## Selected Validation Data



HL-60 cells were subjected to SDS PAGE followed by western blot with 19701-1-AP (CYP4F3 Antibody) at dilution of 1:300 incubated at 4 degree celsius over night. This data was developed using the same antibody clone with 19701-1-PBS in a different storage buffer formulation.



Immunohistochemical analysis of paraffin-embedded human ovarian cancer slide using 19701-1-AP (CYP4F3 antibody) at dilution of 1:100 (under 20x lens). Heat mediated antigen retrieval with Tris-EDTA buffer (pH 9.0). This data was developed using the same antibody clone with 19701-1-PBS in a different storage buffer formulation.