

For Research Use Only

CYP4F3 Polyclonal antibody

Catalog Number: 19701-1-AP



Basic Information

Catalog Number:

19701-1-AP

Size:

600 µg/ml

Source:

Rabbit

Isotype:

IgG

GenBank Accession Number:

NM_000896

GeneID (NCBI):

4051

UNIPROT ID:

Q08477

Full Name:

cytochrome P450, family 4, subfamily F, polypeptide 3

Calculated MW:

60 kDa

Observed MW:

60 kDa

Purification Method:

Antigen affinity purification

Recommended Dilutions:

WB 1:200-1:1000

Applications

Tested Applications:

WB, ELISA

Species Specificity:

human

Positive Controls:

WB : HL-60 cells,

Background Information

CYP4F3, also named as LTB4H and CYPIVF3, belongs to the cytochrome P450 family. Cytochromes P450 are a group of heme-thiolate monooxygenases. CYP4F3 requires molecular oxygen and NADPH for the omega-hydroxylation of LTB4, a potent chemoattractant for polymorphonuclear leukocytes.

Storage

Storage:

Store at -20°C. Stable for one year after shipment.

Storage Buffer:

PBS with 0.02% sodium azide and 50% glycerol pH 7.3.

Aliquoting is unnecessary for -20°C storage

For technical support and original validation data for this product please contact:

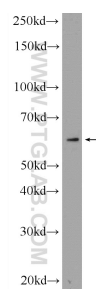
T: 4006900926

E: Proteintech-CN@ptglab.com

W: ptgcn.com

This product is exclusively available under Proteintech Group brand and is not available to purchase from any other manufacturer.

Selected Validation Data



HL-60 cells were subjected to SDS PAGE followed by western blot with 19701-1-AP (CYP4F3 Antibody) at dilution of 1:300 incubated at 4 degree celsius over night.