

For Research Use Only

# LIMK1 Polyclonal antibody

Catalog Number: 19699-1-AP **6 Publications**



## Basic Information

<b>Catalog Number:</b> 19699-1-AP	<b>GenBank Accession Number:</b> NM_002314	<b>Purification Method:</b> Antigen affinity purification
<b>Size:</b> 350 µg/ml	<b>GeneID (NCBI):</b> 3984	<b>Recommended Dilutions:</b> IHC 1:20-1:200 IF 1:50-1:500
<b>Source:</b> Rabbit	<b>UNIPROT ID:</b> P53667	
<b>Isotype:</b> IgG	<b>Full Name:</b> LIM domain kinase 1	
	<b>Calculated MW:</b> 73 kDa	

## Applications

<b>Tested Applications:</b> IF/ICC, IHC, ELISA	<b>Positive Controls:</b>
<b>Cited Applications:</b> IHC	<b>IHC:</b> human heart tissue, human brain tissue
<b>Species Specificity:</b> human, mouse	<b>IF:</b> HeLa cells,
<b>Cited Species:</b> human, mouse	
<b>Note-IHC: suggested antigen retrieval with TE buffer pH 9.0; (*) Alternatively, antigen retrieval may be performed with citrate buffer pH 6.0</b>	

## Background Information

LIMK1, also named LIMK, belongs to the protein kinase superfamily and TKL Ser/Thr protein kinase family. LIMK1 is a protein kinase which regulates actin filament dynamics. Phosphorylates and inactivates the actin binding/depolymerizing factor cofilin, thereby stabilizing the actin cytoskeleton. Isoform 3 has a dominant negative effect on actin cytoskeletal changes. LIMK1 may be involved in brain development. The antibody has no cross-reaction with LIMK2.

## Notable Publications

Author	Pubmed ID	Journal	Application
Xiufang Yang	33760158	Oncol Rep	IHC
Yue Zhang	29970879	Cell Death Dis	
Nengquan Sheng	28440035	Cancer Med	

## Storage

**Storage:**  
Store at -20°C. Stable for one year after shipment.  
**Storage Buffer:**  
PBS with 0.02% sodium azide and 50% glycerol pH 7.3.  
Aliquoting is unnecessary for -20°C storage

For technical support and original validation data for this product please contact:

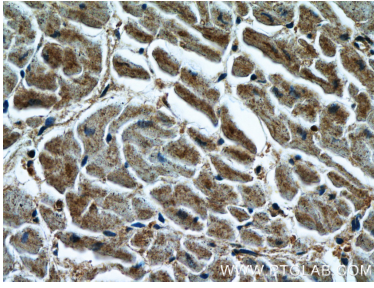
T: 4006900926

E: [Proteintech-CN@ptglab.com](mailto:Proteintech-CN@ptglab.com)

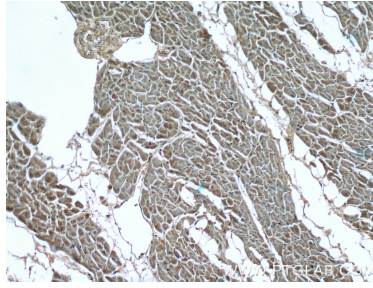
W: [ptgcn.com](http://ptgcn.com)

**This product is exclusively available under Proteintech Group brand and is not available to purchase from any other manufacturer.**

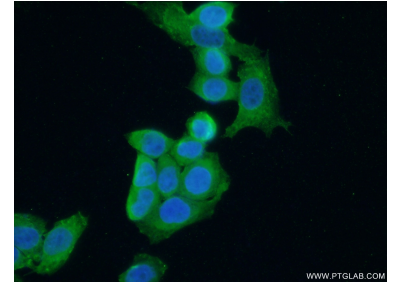
## Selected Validation Data



Immunohistochemical analysis of paraffin-embedded human heart tissue slide using 19699-1-AP (LIMK1 Antibody) at dilution of 1:200 (under 40x lens).



Immunohistochemical analysis of paraffin-embedded human heart tissue slide using 19699-1-AP (LIMK1 Antibody) at dilution of 1:200 (under 10x lens).



Immunofluorescent analysis of (10% Formaldehyde) fixed HeLa cells using 19699-1-AP (LIMK1 antibody) at dilution of 1:50 and Alexa Fluor 488-conjugated AffiniPure Goat Anti-Rabbit IgG(H+L).