

Integrin beta-6-Specific Polyclonal antibody

Catalog Number: 19695-1-AP

7 Publications

Basic Information

Catalog Number:

19695-1-AP

Size:

550 µg/ml

Source:

Rabbit

Isotype:

IgG

GenBank Accession Number:

NM_000888

GeneID (NCBI):

3694

UNIPROT ID:

P18564

Full Name:

integrin, beta 6

Calculated MW:

86 kDa

Observed MW:

97 kDa

Purification Method:

Antigen affinity purification

Recommended Dilutions:

WB 1:500-1:1000

IHC 1:20-1:200

IF/ICC 1:50-1:500

Applications

Tested Applications:

IF/ICC, IHC, WB, ELISA

Cited Applications:

WB, IP, IF, IHC

Species Specificity:

human

Cited Species:

human, rat, mouse

Note-IHC: suggested antigen retrieval with TE buffer pH 9.0; (*) Alternatively, antigen retrieval may be performed with citrate buffer pH 6.0

Positive Controls:

WB : A549 cells, A2780 cells

IHC : human lung tissue,

IF/ICC : A549 cells,

Background Information

ITGB6 belongs to the integrin beta chain family. ITGB6 is a receptor for fibronectin and cytactin. It recognizes the sequence R-G-D in its ligands. Internalisation of integrin alpha-V/beta-6 via clathrin-mediated endocytosis promotes carcinoma cell invasion. The antibody is specific to ITGB6.

Notable Publications

Author	Pubmed ID	Journal	Application
Dalong Cao	30808674	Cancer Res	WB
Kathleen K Catignas	32744761	Glia	WB
Feikai Lin	35392966	J Exp Clin Cancer Res	WB,IF,IP

Storage

Storage:

Store at -20°C. Stable for one year after shipment.

Storage Buffer:

PBS with 0.02% sodium azide and 50% glycerol pH 7.3.

Aliquoting is unnecessary for -20°C storage

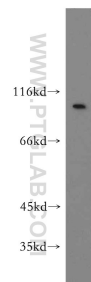
For technical support and original validation data for this product please contact:

T: 4006900926

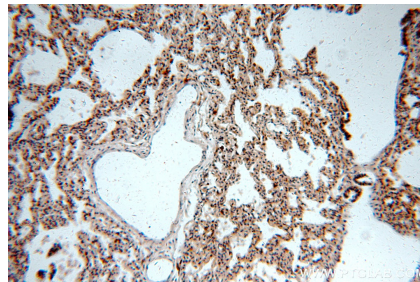
E: Proteintech-CN@ptglab.comW: ptgcn.com

This product is exclusively available under Proteintech Group brand and is not available to purchase from any other manufacturer.

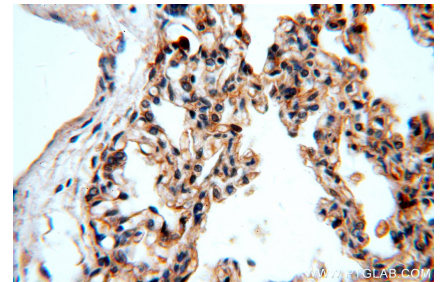
Selected Validation Data



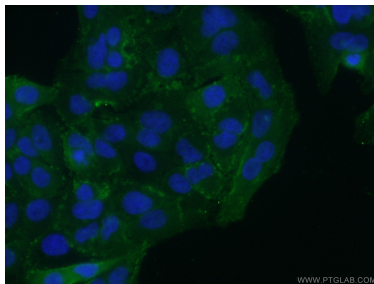
A549 cells were subjected to SDS PAGE followed by western blot with 19695-1-AP (ITGB6-Specific antibody) at dilution of 1:500 incubated at room temperature for 1.5 hours.



Immunohistochemical analysis of paraffin-embedded human lung using 19695-1-AP (ITGB6-Specific antibody) at dilution of 1:100 (under 10x lens).



Immunohistochemical analysis of paraffin-embedded human lung using 19695-1-AP (ITGB6-Specific antibody) at dilution of 1:100 (under 40x lens).



Immunofluorescent analysis of (10% Formaldehyde) fixed A549 cells using 19695-1-AP (Integrin beta-6-Specific antibody) at dilution of 1:50 and Alexa Fluor 488-conjugated AffiniPure Goat Anti-Rabbit IgG(H+L).