

For Research Use Only

EIF2C1-Specific Polyclonal antibody



Catalog Number: 19690-1-AP **3 Publications**

Basic Information

Catalog Number: 19690-1-AP	GenBank Accession Number: NM_012199	Purification Method: Antigen affinity purification
Size: 800 µg/ml	GeneID (NCBI): 26523	Recommended Dilutions: WB 1:500-1:2000 IHC 1:20-1:200 IF/ICC 1:10-1:100
Source: Rabbit	UNIPROT ID: Q9UL18	
Isotype: IgG	Full Name: eukaryotic translation initiation factor 2C, 1	
	Calculated MW: 97 kDa	
	Observed MW: 97 kDa	

Applications

Tested Applications:
IF/ICC, IHC, WB, ELISA

Cited Applications:
WB, IF

Species Specificity:
human, mouse, rat

Cited Species:
human, mouse

Note-IHC: suggested antigen retrieval with TE buffer pH 9.0; (*) Alternatively, antigen retrieval may be performed with citrate buffer pH 6.0

Positive Controls:

WB: HeLa cells, HEK-293 cells, Jurkat cells, K-562 cells, NIH/3T3 cells

IHC: human cervical cancer tissue, human ovary tumor tissue

IF/ICC: HepG2 cells,

Background Information

EIF2C1, also named as AGO1, belongs to the argonaute family and Ago subfamily. EIF2C1 is required for RNA-mediated gene silencing (RNAi). It binds to short RNAs such as microRNAs (miRNAs) or short interfering RNAs (siRNAs), and represses the translation of mRNAs which are complementary to them. Lacks endonuclease activity and does not appear to cleave target mRNAs. EIF2C1 may also be required for transcriptional gene silencing (TGS) of promoter regions which are complementary to bound short antigen RNAs (agRNAs). The antibody is specific to EIF2C1.

Notable Publications

Author	Pubmed ID	Journal	Application
Xueting Wang	35284630	Mol Ther Oncolytics	WB
Belinda J Goldie	28878619	Front Mol Neurosci	IF
Norjin Zolboot	37808721	bioRxiv	IF

Storage

Storage:

Store at -20°C. Stable for one year after shipment.

Storage Buffer:

PBS with 0.02% sodium azide and 50% glycerol pH 7.3.

Aliquoting is unnecessary for -20°C storage

For technical support and original validation data for this product please contact:

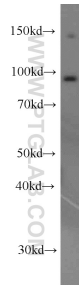
T: 4006900926

E: Proteintech-CN@ptglab.com

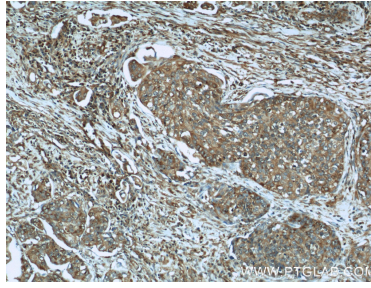
W: ptgcn.com

This product is exclusively available under Proteintech Group brand and is not available to purchase from any other manufacturer.

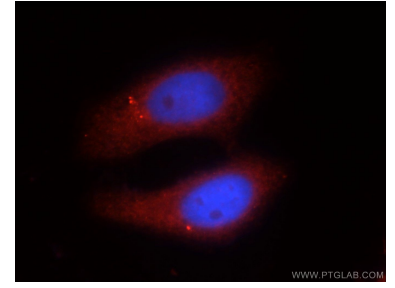
Selected Validation Data



HeLa cells were subjected to SDS PAGE followed by western blot with 19690-1-AP (EIF2C1-Specific antibody) at dilution of 1:1000 incubated at room temperature for 1.5 hours.



Immunohistochemical analysis of paraffin-embedded human cervical cancer using 19690-1-AP (EIF2C1-Specific antibody) at dilution of 1:50 (under 10x lens).



Immunofluorescent analysis of HepG2 cells using 19690-1-AP (EIF2C1-Specific antibody) at dilution of 1:25 and Rhodamine-Goat anti-Rabbit IgG.