

For Research Use Only

HSPG2-Specific Polyclonal antibody

Catalog Number: 19675-1-AP

2 Publications



Basic Information

Catalog Number:

19675-1-AP

Concentration:

550 ug/ml

Source:

Rabbit

Isotype:

IgG

GenBank Accession Number:

NM_005529

GeneID (NCBI):

3339

UNIPROT ID:

P98160

Full Name:

heparan sulfate proteoglycan 2

Calculated MW:

469 kDa

Observed MW:

469 kDa

Purification Method:

Antigen affinity purification

Recommended Dilutions:

WB 1:500-1:2000

Applications

Tested Applications:

WB, ELISA

Cited Applications:

WB

Species Specificity:

human, mouse, rat

Cited Species:

human

Positive Controls:

WB : COLO 320 cells,

Background Information

HSPG2, also named as PLC and HSPG, is an integral component of basement membranes. It is responsible for the fixed negative electrostatic charge and is involved in the charge-selective ultrafiltration properties. It serves as an attachment substrate for cells. Defects in HSPG2 are the cause of Schwartz-Jampel syndrome (SJS1). Defects in HSPG2 are the cause of dyssegmental dysplasia Silverman-Handmaker type (DDSH). The antibody is specific to HSPG2.

Notable Publications

Author	Pubmed ID	Journal	Application
Aixue Huang	26157350	Int J Biol Sci	WB
Shuang Luo	38710714	Nat Commun	

Storage

Storage:

Store at -20°C. Stable for one year after shipment.

Storage Buffer:

PBS with 0.02% sodium azide and 50% glycerol pH 7.3.

Aliquoting is unnecessary for -20°C storage

For technical support and original validation data for this product please contact:

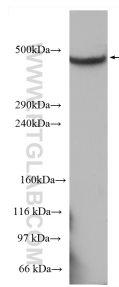
T: 4006900926

E: Proteintech-CN@ptglab.com

W: ptgcn.com

This product is exclusively available under Proteintech Group brand and is not available to purchase from any other manufacturer.

Selected Validation Data



COLO 320 cells were subjected to SDS PAGE followed by western blot with 19675-1-AP (HSPG2-Specific antibody) at dilution of 1:1000 incubated at room temperature for 1.5 hours.