

For Research Use Only

# RHOG-Specific Polyclonal antibody

Catalog Number: 19671-1-AP



## Basic Information

<b>Catalog Number:</b> 19671-1-AP	<b>GenBank Accession Number:</b> NM_001665	<b>Purification Method:</b> Antigen affinity purification
<b>Size:</b> 270 µg/ml	<b>GeneID (NCBI):</b> 391	<b>Recommended Dilutions:</b> WB 1:500-1:2000
<b>Source:</b> Rabbit	<b>UNIPROT ID:</b> P84095	
<b>Isotype:</b> IgG	<b>Full Name:</b> ras homolog gene family, member G (rho G)	
	<b>Calculated MW:</b> 21 kDa	
	<b>Observed MW:</b> 21 kDa	

## Applications

<b>Tested Applications:</b> WB, ELISA	<b>Positive Controls:</b> WB : MDA-MB-453s cells, C6 cells, HeLa cells, MCF-7 cells, Neuro-2a cells, NIH/3T3 cells
<b>Species Specificity:</b> human, mouse, rat	

## Background Information

RHOG, also named as ARHG, belongs to the small GTPase superfamily and Rho family. It is required for the formation of membrane ruffles during macropinocytosis. And it is required for the formation of cup-like structures during trans-endothelial migration of leukocytes. In case of Salmonella enterica infection, it is activated by SopB and SGEF, which induces cytoskeleton rearrangements and promotes bacterial entry. This antibody is specific to RHOG.

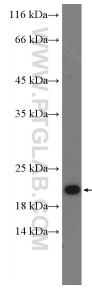
## Storage

**Storage:**  
Store at -20°C. Stable for one year after shipment.  
**Storage Buffer:**  
PBS with 0.02% sodium azide and 50% glycerol pH 7.3.  
Aliquoting is unnecessary for -20°C storage

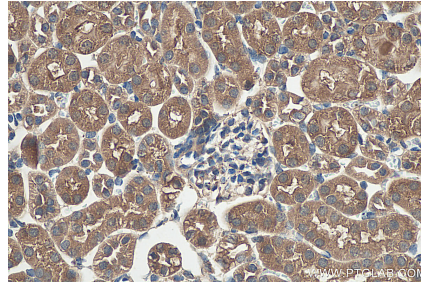
For technical support and original validation data for this product please contact:  
T: 4006900926 E: Proteintech-CN@ptglab.com W: ptgcn.com

This product is exclusively available under Proteintech Group brand and is not available to purchase from any other manufacturer.

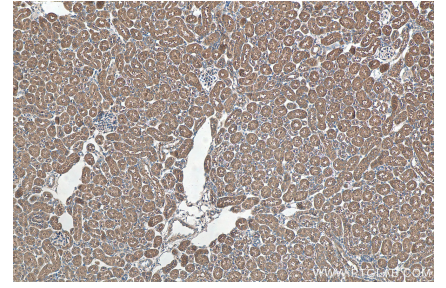
## Selected Validation Data



MDA-MB-453s cells were subjected to SDS PAGE followed by western blot with 19671-1-AP (RHO G-Specific Antibody) at dilution of 1:1000 incubated at room temperature for 1.5 hours.



Immunohistochemical analysis of paraffin-embedded mouse kidney tissue slide using 19671-1-AP (RHO G-Specific antibody) at dilution of 1:200 (under 40x lens). Heat mediated antigen retrieval with Tris-EDTA buffer (pH 9.0).



Immunohistochemical analysis of paraffin-embedded mouse kidney tissue slide using 19671-1-AP (RHO G-Specific antibody) at dilution of 1:200 (under 10x lens). Heat mediated antigen retrieval with Tris-EDTA buffer (pH 9.0).