

For Research Use Only

RGC32 Polyclonal antibody

Catalog Number: 19556-1-AP

Featured Product

1 Publications



Basic Information

Catalog Number:

19556-1-AP

Concentration:

550 ug/ml

Source:

Rabbit

Isotype:

IgG

GenBank Accession Number:

NM_014059

GeneID (NCBI):

28984

UNIPROT ID:

Q9H4X1

Full Name:

chromosome 13 open reading frame
15

Calculated MW:

15 kDa

Observed MW:

13-15 kDa

Purification Method:

Antigen affinity purification

Recommended Dilutions:

WB 1:500-1:3000

IHC 1:50-1:500

IF/ICC 1:400-1:1600

Applications

Tested Applications:

WB, IHC, IF/ICC, ELISA

Cited Applications:

WB, IF

Species Specificity:

human, mouse

Cited Species:

mouse

**Note-IHC: suggested antigen retrieval with
TE buffer pH 9.0; (*) Alternatively, antigen
retrieval may be performed with citrate
buffer pH 6.0**

Positive Controls:

WB : mouse brain tissue, mouse liver tissue

IHC : mouse kidney tissue,

IF/ICC : Caco-2 cells,

Background Information

RGC32, also named as C13orf15, modulates the activity of cell cycle-specific kinases. RGC32 enhances CDC2 activity. RGC32 may contribute to the regulation of the cell cycle. And it inhibits growth of glioma cells by promoting arrest of mitotic progression at the G2/M transition. The antibody can recognize these 2 isoforms of RGC32.

Notable Publications

| Author | Pubmed ID | Journal | Application |
|--------------|-----------|-----------|-------------|
| Chenming Sun | 29507108 | J Immunol | WB,IF |

Storage

Storage:

Store at -20°C. Stable for one year after shipment.

Storage Buffer:

PBS with 0.02% sodium azide and 50% glycerol pH 7.3.

Aliquoting is unnecessary for -20°C storage

For technical support and original validation data for this product please contact:

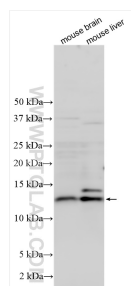
T: 4006900926

E: Proteintech-CN@ptglab.com

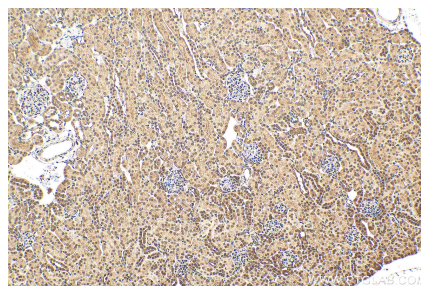
W: ptgcn.com

This product is exclusively available under Proteintech Group brand and is not available to purchase from any other manufacturer.

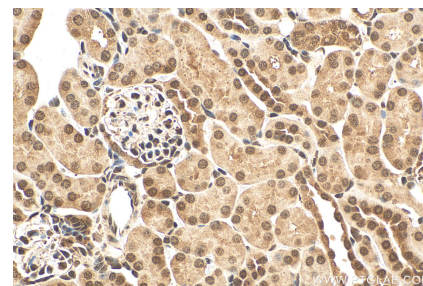
Selected Validation Data



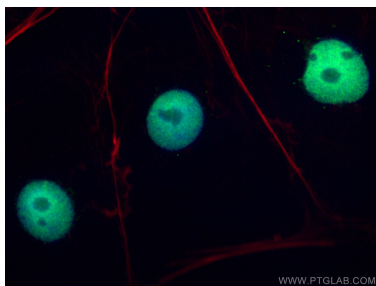
Various lysates were subjected to SDS PAGE followed by western blot with 19556-1-AP (RGC32 antibody) at dilution of 1:1500 incubated at room temperature for 1.5 hours.



Immunohistochemical analysis of paraffin-embedded mouse kidney tissue slide using 19556-1-AP (RGC32 antibody) at dilution of 1:200 (under 10x lens). Heat mediated antigen retrieval with Tris-EDTA buffer (pH 9.0).



Immunohistochemical analysis of paraffin-embedded mouse kidney tissue slide using 19556-1-AP (RGC32 antibody) at dilution of 1:200 (under 40x lens). Heat mediated antigen retrieval with Tris-EDTA buffer (pH 9.0).



Immunofluorescent analysis of (4% PFA) fixed Caco-2 cells using RGC32 antibody (19556-1-AP) at dilution of 1:800 and CoraLite® 488-Conjugated AffiniPure Goat Anti-Rabbit IgG(H+L), CL594-phalloidin (red).