

# Phospho-PLK1 (Ser326) Polyclonal antibody

Catalog Number: 19553-1-AP

2 Publications

## Basic Information

## Catalog Number:

19553-1-AP

## Size:

366 µg/ml

## Source:

Rabbit

## Isotype:

IgG

## GenBank Accession Number:

NM\_005030

## GeneID (NCBI):

5347

## UNIPROT ID:

P53350

## Full Name:

polo-like kinase 1 (Drosophila)

## Calculated MW:

68 kDa

## Observed MW:

66 kDa

## Purification Method:

Antigen affinity purification

## Recommended Dilutions:

WB 1:200-1:1000

IHC 1:20-1:200

## Applications

## Tested Applications:

IHC, WB, ELISA

## Cited Applications:

WB

## Species Specificity:

human, mouse, rat

## Cited Species:

human, rat, mouse

**Note-IHC: suggested antigen retrieval with TE buffer pH 9.0; (\*) Alternatively, antigen retrieval may be performed with citrate buffer pH 6.0**

## Positive Controls:

WB : MCF-7 cells,

IHC : human colon tissue,

## Background Information

PLK1, also named as PLK and STPK13, belongs to the protein kinase superfamily, Ser/Thr protein kinase family and CDC5/Polo subfamily. PLK1 is a Serine/threonine-protein kinase that performs several important functions throughout M phase of the cell cycle, including the regulation of centrosome maturation and spindle assembly, the removal of cohesins from chromosome arms, the inactivation of APC/C inhibitors, and the regulation of mitotic exit and cytokinesis. The antibody is specific to Ser(326)-phospho.

## Notable Publications

Author	Pubmed ID	Journal	Application
Momoka Ota	34333065	Toxicol Lett	WB
Jia-Feng Tang	33548212	Arch Biochem Biophys	WB

## Storage

## Storage:

Store at -20°C. Stable for one year after shipment.

## Storage Buffer:

PBS with 0.02% sodium azide and 50% glycerol pH 7.3.

Aliquoting is unnecessary for -20°C storage

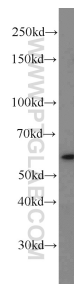
For technical support and original validation data for this product please contact:

T: 4006900926

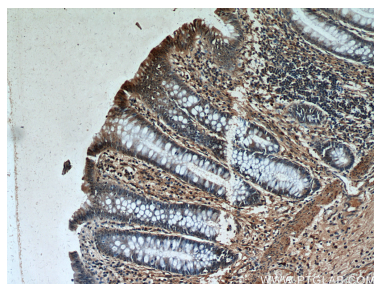
E: [Proteintech-CN@ptglab.com](mailto:Proteintech-CN@ptglab.com)W: [ptgcn.com](http://ptgcn.com)

This product is exclusively available under Proteintech Group brand and is not available to purchase from any other manufacturer.

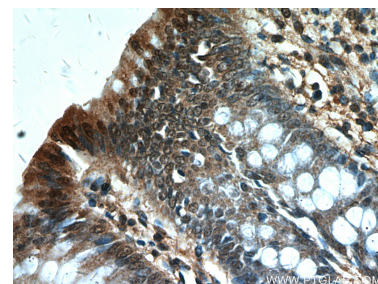
## Selected Validation Data



MCF-7 cells were subjected to SDS PAGE followed by western blot with 19553-1-AP (PLK1-phospho(S326) antibody) at dilution of 1:200 incubated at room temperature for 1.5 hours.



Immunohistochemical analysis of paraffin-embedded human colon using 19553-1-AP (PLK1-phospho(S326) antibody) at dilution of 1:50 (under 10x lens).



Immunohistochemical analysis of paraffin-embedded human colon using 19553-1-AP (PLK1-phospho(S326) antibody) at dilution of 1:50 (under 40x lens).