

For Research Use Only

FEM1B Polyclonal antibody

Catalog Number: 19544-1-AP

Featured Product

4 Publications



Basic Information

Catalog Number:

19544-1-AP

Size:

600 µg/ml

Source:

Rabbit

Isotype:

IgG

GenBank Accession Number:

NM_015322

GeneID (NCBI):

10116

UNIPROT ID:

Q9UK73

Full Name:

fem-1 homolog b (C. elegans)

Calculated MW:

70 kDa

Observed MW:

70 kDa

Purification Method:

Antigen affinity purification

Recommended Dilutions:

WB 1:500-1:1000

IHC 1:50-1:500

IF/ICC 1:200-1:800

Applications

Tested Applications:

WB, IHC, IF/ICC, ELISA

Cited Applications:

WB, IF

Species Specificity:

human, mouse, rat

Cited Species:

human, mouse

Note-IHC: suggested antigen retrieval with TE buffer pH 9.0; (*) Alternatively, antigen retrieval may be performed with citrate buffer pH 6.0

Positive Controls:

WB : PC-3 cells, mouse pancreas tissue, mouse testis tissue

IHC : human pancreas cancer tissue, mouse pancreas tissue

IF/ICC : PC-3 cells,

Background Information

FEM1B, also named F1AA and KIAA0396, belongs to the fem-1 family. FEM1B is a component of an E3 ubiquitin-protein ligase complex, in which it may act as a substrate recognition subunit. FEM1B is involved in apoptosis by acting as a death receptor-associated protein that mediates apoptosis. It is involved in glucose homeostasis in pancreatic islets.

Notable Publications

Author	Pubmed ID	Journal	Application
Andrew G Manford	32941802	Cell	WB
Nathaniel J. Henning	34994556	J Am Chem Soc	WB
Rachael McMinimy	39642856	Mol Cell	WB,IF

Storage

Storage:

Store at -20°C. Stable for one year after shipment.

Storage Buffer:

PBS with 0.02% sodium azide and 50% glycerol pH 7.3.

Aliquoting is unnecessary for -20°C storage

For technical support and original validation data for this product please contact:

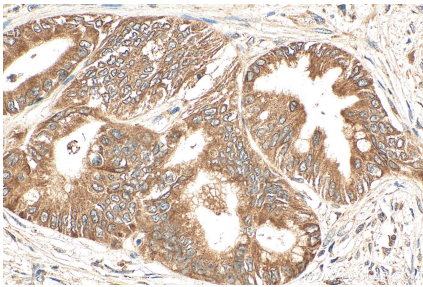
T: 4006900926

E: Proteintech-CN@ptglab.com

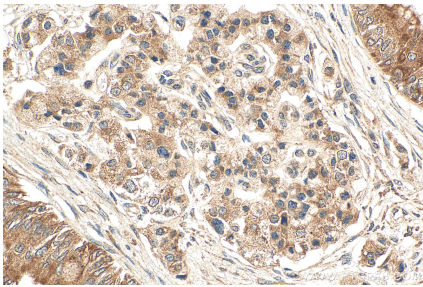
W: ptgcn.com

This product is exclusively available under Proteintech Group brand and is not available to purchase from any other manufacturer.

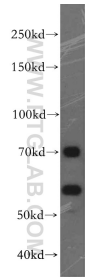
Selected Validation Data



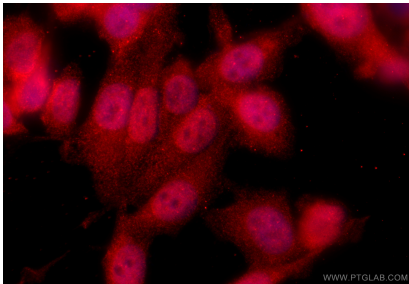
Immunohistochemical analysis of paraffin-embedded human pancreas cancer tissue slide using 19544-1-AP (FEM1B antibody) at dilution of 1:200 (under 40x lens). Heat mediated antigen retrieval with Tris-EDTA buffer (pH 9.0).



Immunohistochemical analysis of paraffin-embedded human pancreas cancer tissue slide using 19544-1-AP (FEM1B antibody) at dilution of 1:200 (under 40x lens). Heat mediated antigen retrieval with Tris-EDTA buffer (pH 9.0).



PC-3 cells were subjected to SDS PAGE followed by western blot with 19544-1-AP (FEM1B antibody) at dilution of 1:300 incubated at room temperature for 1.5 hours.



Immunofluorescent analysis of (4% PFA) fixed PC-3 cells using FEM1B antibody (19544-1-AP) at dilution of 1:400 and CoraLite®594-Conjugated Goat Anti-Rabbit IgG(H+L) (SA00013-4).