

For Research Use Only

SPIN1-Specific Polyclonal antibody

Catalog Number: 19531-1-AP

Featured Product

4 Publications



Basic Information

Catalog Number:

19531-1-AP

Size:

700 µg/ml

Source:

Rabbit

Isotype:

IgG

GenBank Accession Number:

NM_006717

GeneID (NCBI):

10927

UNIPROT ID:

Q9Y657

Full Name:

spindlin 1

Calculated MW:

30 kDa

Observed MW:

30 kDa

Purification Method:

Antigen affinity purification

Recommended Dilutions:

WB 1:500-1:2000

IHC 1:20-1:200

IF 1:10-1:100

Applications

Tested Applications:

IF/ICC, IHC, WB, ELISA

Cited Applications:

WB, IHC

Species Specificity:

human

Cited Species:

human

Note-IHC: suggested antigen retrieval with TE buffer pH 9.0; (*) Alternatively, antigen retrieval may be performed with citrate buffer pH 6.0

Positive Controls:

WB : SKOV-3 cells, A2780 cells, HEK-293 cells

IHC : human ovary tumor tissue,

IF : Hela cells,

Background Information

SPIN1 (Spindlin 1) is a histone methylation reader, which recognizes trimethylated histone H3 lysine 4 through the protein-protein interaction. SPIN1 was initially found in ovarian cancer via searching ovarian cancer-related genes. It is overexpressed in ovarian cancer tissue, which exhibits a high homology to mouse Spin (Spindlin) gene. Signaling pathways responsible for SPIN1 functions include PI3K/Akt, Wnt and RET that are highly relevant to tumorigenesis. (PMID: 34492335, PMID: 31790762)

Notable Publications

Author	Pubmed ID	Journal	Application
Ling Zhou	34753384	Bioengineered	IHC
Xu Chen	29743122	J Exp Clin Cancer Res	IHC
Sulpizio Marilisa M	21826706	J Cell Biochem	WB

Storage

Storage:

Store at -20°C. Stable for one year after shipment.

Storage Buffer:

PBS with 0.02% sodium azide and 50% glycerol pH 7.3.

Aliquoting is unnecessary for -20°C storage

For technical support and original validation data for this product please contact:

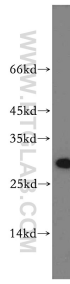
T: 4006900926

E: Proteintech-CN@ptglab.com

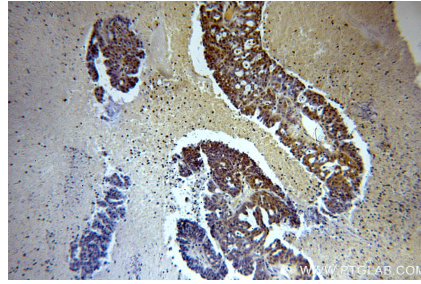
W: ptgcn.com

This product is exclusively available under Proteintech Group brand and is not available to purchase from any other manufacturer.

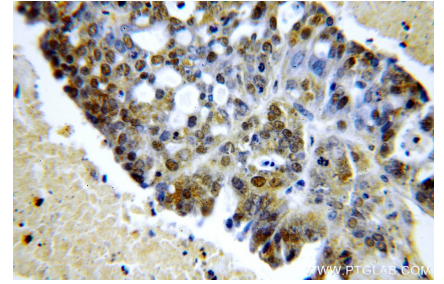
Selected Validation Data



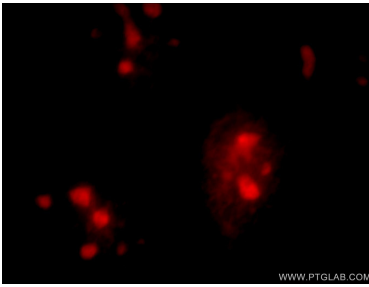
SKOV-3 cells were subjected to SDS PAGE followed by western blot with 19531-1-AP (SPIN1-Specific antibody) at dilution of 1:500 incubated at room temperature for 1.5 hours.



Immunohistochemical analysis of paraffin-embedded human ovary tumor using 19531-1-AP (SPIN1-Specific antibody) at dilution of 1:100 (under 10x lens).



Immunohistochemical analysis of paraffin-embedded human ovary tumor using 19531-1-AP (SPIN1-Specific antibody) at dilution of 1:100 (under 40x lens).



Immunofluorescent analysis of HeLa cells, using SPIN1 antibody 19531-1-AP at 1:25 dilution and Rhodamine-labeled goat anti-rabbit IgG (red).