

For Research Use Only

NY-ESO-1 Polyclonal antibody, PBS Only

Catalog Number: 19521-1-PBS



Basic Information

Catalog Number:

19521-1-PBS

Source:

Rabbit

Isotype:

IgG

GenBank Accession Number:

NM_139250

GeneID (NCBI):

246100

UNIPROT ID:

P78358

Full Name:

cancer/testis antigen 1A

Calculated MW:

18 kDa

Observed MW:

16-25 kDa

Purification Method:

Antigen affinity purification

Applications

Tested Applications:

WB, IHC, IP, Indirect ELISA

Species Specificity:

human

Background Information

CTAG1A, also named as NY-ESO-1, CTAG, CTAG1, ESO1, LAGE2, LAGE2A, CTAG1B, LAGE2B and CT6.1, belongs to the CTAG family.

Storage

Storage:

Store at -80°C.

The product is shipped with ice packs. Upon receipt, store it immediately at -80°C

Storage Buffer:

PBS only, pH7.3

For technical support and original validation data for this product please contact:

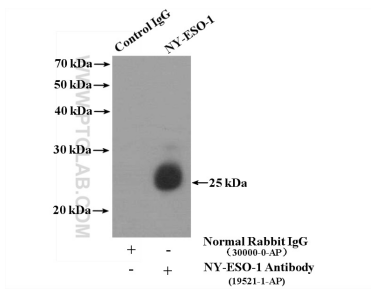
T: 4006900926

E: Proteintech-CN@ptglab.com

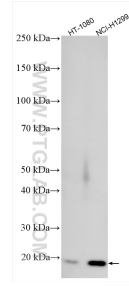
W: ptgcn.com

This product is exclusively available under Proteintech Group brand and is not available to purchase from any other manufacturer.

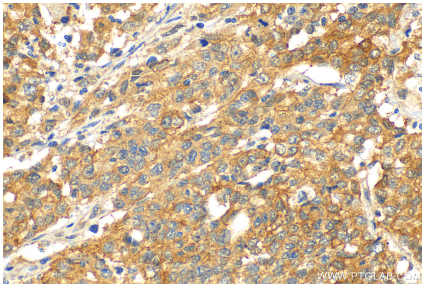
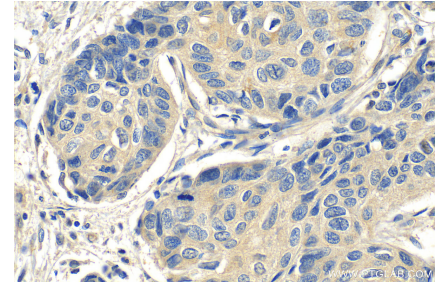
Selected Validation Data



IP result of anti-NY-ESO-1 (IP:19521-1-AP, 4 μ g; Detection:19521-1-AP 1:500) with HepG2 cells lysate 3200 μ g. This data was developed using the same antibody clone with 19521-1-PBS in a different storage buffer formulation.



Various lysates were subjected to SDS PAGE followed by western blot with 19521-1-AP (NY-ESO-1 antibody) at dilution of 1:500 incubated at room temperature for 1.5 hours. This data was developed using the same antibody clone with 19521-1-PBS in a different storage buffer formulation.



Immunohistochemical analysis of paraffin-embedded human stomach cancer tissue slide using 19521-1-AP (NY-ESO-1 antibody) at dilution of 1:200 (under 40x lens). Heat mediated antigen retrieval with Tris-EDTA buffer (pH 9.0). This data was developed using the same antibody clone with 19521-1-PBS in a different storage buffer formulation.