

For Research Use Only

NY-ESO-1 Polyclonal antibody

Catalog Number: 19521-1-AP

4 Publications



Basic Information

Catalog Number:

19521-1-AP

Concentration:

300 ug/ml

Source:

Rabbit

Isotype:

IgG

GenBank Accession Number:

NM_139250

GeneID (NCBI):

246100

UNIPROT ID:

P78358

Full Name:

cancer/testis antigen 1A

Calculated MW:

18 kDa

Observed MW:

16-25 kDa

Purification Method:

Antigen affinity purification

Recommended Dilutions:

WB 1:200-1:1000

IP 0.5-4.0 ug for 1.0-3.0 mg of total protein lysate

IHC 1:50-1:500

IF/ICC 1:10-1:100

Applications

Tested Applications:

WB, IHC, IF/ICC, IP, ELISA

Cited Applications:

WB, IF

Species Specificity:

human

Cited Species:

human

Positive Controls:

WB : human testis tissue, HT-1080 cells, NCI-H1299 cells

IP : HepG2 cells,

IHC : human lung cancer tissue, human stomach cancer tissue

IF/ICC : HepG2 cells,

Note-IHC: suggested antigen retrieval with TE buffer pH 9.0; (*) Alternatively, antigen retrieval may be performed with citrate buffer pH 6.0

Background Information

CTAG1A, also named as NY-ESO-1, CTAG, CTAG1, ESO1, LAGE2, LAGE2A, CTAG1B, LAGE2B and CT6.1, belongs to the CTAG family.

Notable Publications

Author	Pubmed ID	Journal	Application
Jiang Liu	35122000	Nat Cancer	WB
Ling Wang	38615022	Cell Death Dis	IF, WB
Chuan Yang	38575583	Signal Transduct Target Ther	WB

Storage

Storage:

Store at -20°C. Stable for one year after shipment.

Storage Buffer:

PBS with 0.02% sodium azide and 50% glycerol, pH7.3

Aliquoting is unnecessary for -20°C storage

For technical support and original validation data for this product please contact:

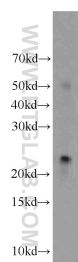
T: 4006900926

E: Proteintech-CN@ptglab.com

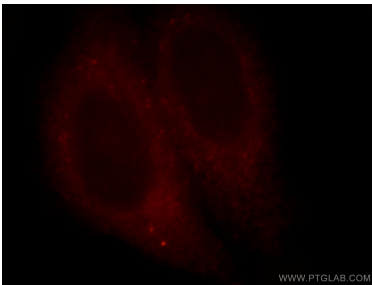
W: ptgcn.com

This product is exclusively available under Proteintech Group brand and is not available to purchase from any other manufacturer.

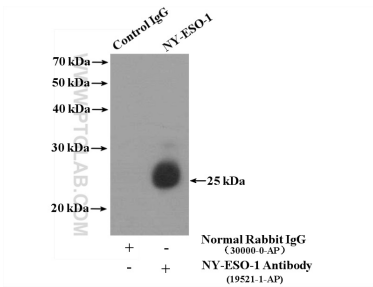
Selected Validation Data



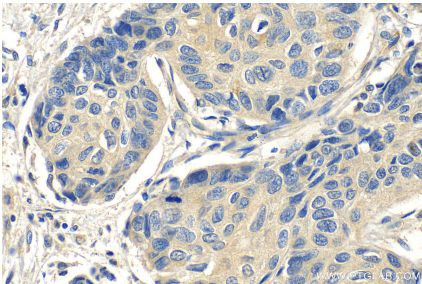
human testis tissue were subjected to SDS PAGE followed by western blot with 19521-1-AP (CTAG1A antibody) at dilution of 1:100 incubated at room temperature for 1.5 hours.



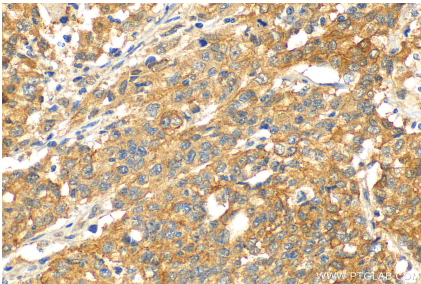
Immunofluorescent analysis of HepG2 cells, using CTAG1A antibody 19521-1-AP at 1:25 dilution and Rhodamine-labeled goat anti-rabbit IgG (red).



IP result of anti-NY-ESO-1 (IP:19521-1-AP, 4ug; Detection:19521-1-AP 1:500) with HepG2 cells lysate 3200ug.



Immunohistochemical analysis of paraffin-embedded human lung cancer tissue slide using 19521-1-AP (NY-ESO-1 antibody) at dilution of 1:200 (under 40x lens). Heat mediated antigen retrieval with Tris-EDTA buffer (pH 9.0).



Immunohistochemical analysis of paraffin-embedded human stomach cancer tissue slide using 19521-1-AP (NY-ESO-1 antibody) at dilution of 1:200 (under 40x lens). Heat mediated antigen retrieval with Tris-EDTA buffer (pH 9.0).