

For Research Use Only

SULT1A3 Polyclonal antibody

Catalog Number: 19499-1-AP **2 Publications**



Basic Information

Catalog Number:

19499-1-AP

Size:

400 µg/ml

Source:

Rabbit

Isotype:

IgG

GenBank Accession Number:

NM_177552

GeneID (NCBI):

6818

UNIPROT ID:

P50224

Full Name:

sulfotransferase family, cytosolic, 1A, phenol-preferring, member 3

Calculated MW:

34 kDa

Observed MW:

30-34 kDa

Purification Method:

Antigen affinity purification

Recommended Dilutions:

WB 1:1000-1:4000

IP 0.5-4.0 µg for 1.0-3.0 mg of total protein lysate

IHC 1:20-1:200

Applications

Tested Applications:

IHC, IP, WB, ELISA

Cited Applications:

WB, IHC

Species Specificity:

human, mouse

Cited Species:

human, mouse

Note-IHC: suggested antigen retrieval with TE buffer pH 9.0; (*) Alternatively, antigen retrieval may be performed with citrate buffer pH 6.0

Positive Controls:

WB: HT-29 cells, HepG2 cells, HuH-7 cells, Caco-2 cells, MCF-7 cells, mouse liver tissue, COLO 320 cells

IP: COLO 320 cells,

IHC: human hepatocirrhosis tissue, human breast cancer tissue

Background Information

SULT1A3, also named as STM and SULT1A4, belongs to the sulfotransferase 1 family. SULT1A3 catalyzes the sulfate conjugation of phenolic monoamines (neurotransmitters such as dopamine, norepinephrine and serotonin) and phenolic and catechol drugs.

Notable Publications

Author	Pubmed ID	Journal	Application
Danyang Tian	33318871	J Adv Res	WB
Miksits Michaela M	19747768	Cancer Lett	IHC

Storage

Storage:

Store at -20°C. Stable for one year after shipment.

Storage Buffer:

PBS with 0.02% sodium azide and 50% glycerol pH 7.3.

Aliquoting is unnecessary for -20°C storage

For technical support and original validation data for this product please contact:

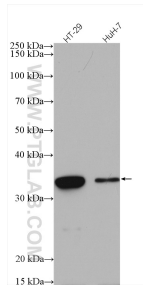
T: 4006900926

E: Proteintech-CN@ptglab.com

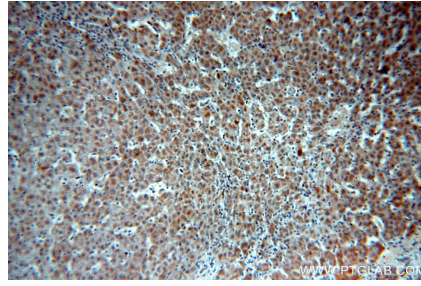
W: ptgcn.com

This product is exclusively available under Proteintech Group brand and is not available to purchase from any other manufacturer.

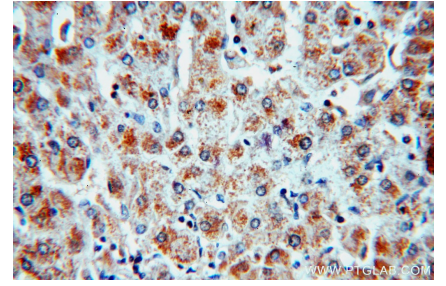
Selected Validation Data



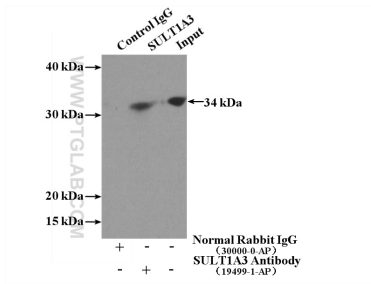
Various lysates were subjected to SDS PAGE followed by western blot with 19499-1-AP (SULT1A3 antibody) at dilution of 1:2000 incubated at room temperature for 1.5 hours.



Immunohistochemical analysis of paraffin-embedded human hepatocirrhosis using 19499-1-AP (SULT1A3 antibody) at dilution of 1:50 (under 10x lens).



Immunohistochemical analysis of paraffin-embedded human hepatocirrhosis using 19499-1-AP (SULT1A3 antibody) at dilution of 1:50 (under 40x lens).



IP result of anti-SULT1A3 (IP:19499-1-AP, 4ug; Detection:19499-1-AP 1:200) with COLO 320 cells lysate 2240ug.