

For Research Use Only

ADCY3 Polyclonal antibody

Catalog Number: 19492-1-AP

17 Publications



Basic Information

Catalog Number:

19492-1-AP

Concentration:

800 ug/ml

Source:

Rabbit

Isotype:

IgG

GenBank Accession Number:

NM_004036

GeneID (NCBI):

109

UNIPROT ID:

O60266

Full Name:

adenylate cyclase 3

Calculated MW:

129 kDa

Observed MW:

130 kDa, 82 kDa

Purification Method:

Antigen affinity purification

Recommended Dilutions:

WB: 1:5000-1:50000

IP: 0.5-4.0 ug for 1.0-3.0 mg of total protein lysate

IHC: 1:20-1:200

IF-P: 1:50-1:500

IF/ICC: 1:200-1:800

Applications

Tested Applications:

WB, IHC, IF/ICC, IF-P, IP, ELISA

Cited Applications:

WB, IHC, IF

Species Specificity:

human, mouse, rat, canine

Cited Species:

human, mouse, rat

Positive Controls:

WB : mouse kidney tissue,

IP : MDCK cells,

IHC : human kidney tissue, human heart tissue

IF-P : rat brain tissue,

IF/ICC : hTERT-RPE1 cells, MDCK cells

Note-IHC: suggested antigen retrieval with TE buffer pH 9.0; (*) Alternatively, antigen retrieval may be performed with citrate buffer pH 6.0

Background Information

ADCY3 is an adenylate cyclase (AC) functioning to convert ATP to cAMP in response to signals initiated by activation of Gs-coupled receptors. To date, 10 isoforms of AC have been cloned in mammals. Initially identified in olfactory cilia, ADCY3 is regarded as the olfactory isoform and required for detection of odorants. Recently it has been found that outside of the olfactory epithelium the olfactory-like signaling pathway including AC3 may also have a key role in spermatogenesis and spermatozoa functions. In addition, the ciliary location of AC3 makes it as a prominent marker for primary cilia in brain. AC3 is typically found at 130 kDa in olfactory tissues. In nonolfactory tissues (such as sperm), this protein is reported to migrate with a molecular mass of 55 kDa, occasionally accompanied by additional bands at either 90 or 130 kDa (PMID:9539154).

Notable Publications

Author	Pubmed ID	Journal	Application
Casey D Gailey	32935890	Dev Dyn	IF
Alessia Di Nardo	34624412	Neurosci Res	WB
Jie Ran	35619548	Adv Sci (Weinh)	IF

Storage

Storage:

Store at -20°C. Stable for one year after shipment.

Storage Buffer:

PBS with 0.02% sodium azide and 50% glycerol, pH7.3

Aliquoting is unnecessary for -20°C storage

For technical support and original validation data for this product please contact:

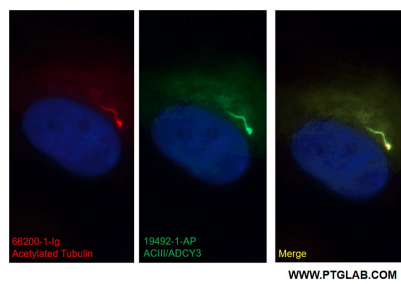
T: 4006900926

E: Proteintech-CN@ptglab.com

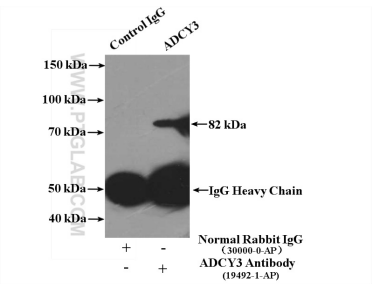
W: ptgcn.com

This product is exclusively available under Proteintech Group brand and is not available to purchase from any other manufacturer.

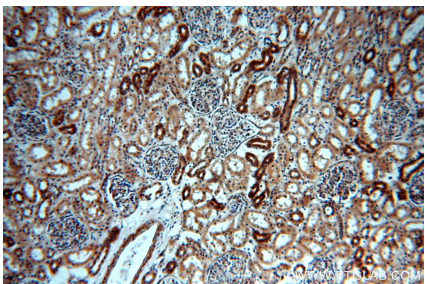
Selected Validation Data



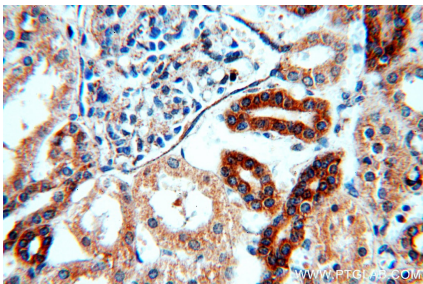
Immunofluorescent analysis of (4% PFA) fixed MDCK cells using 19492-1-AP (ADCY3 antibody) at dilution of 1:50 and Alexa Fluor 488-conjugated AffiniPure Goat Anti-Rabbit IgG(H+L).



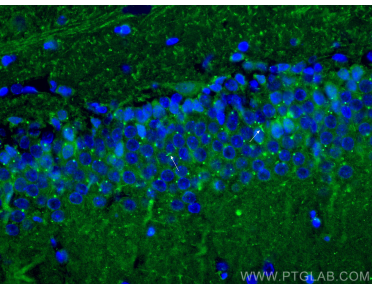
IP result of anti-ADCY3 (IP:19492-1-AP, 4ug; Detection:19492-1-AP 1:500) with MDCK cells lysate 3500ug.



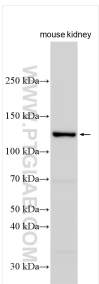
Immunohistochemical analysis of paraffin-embedded human kidney using 19492-1-AP (ADCY3 antibody) at dilution of 1:100 (under 10x lens).



Immunohistochemical analysis of paraffin-embedded human kidney using 19492-1-AP (ADCY3 antibody) at dilution of 1:100 (under 40x lens).



Immunofluorescent analysis of (4% PFA) fixed rat brain tissue using ADCY3 antibody (19492-1-AP) at dilution of 1:200 and CoraLite®488-Conjugated AffiniPure Goat Anti-Rabbit IgG(H+L).



mouse kidney tissue were subjected to SDS PAGE followed by western blot with 19492-1-AP (ADCY3 antibody) at dilution of 1:10000 incubated at room temperature for 1.5 hours.



Immunofluorescent analysis of (4% PFA) fixed hTERT-RPE1 cells using ADCY3 antibody (19492-1-AP) at dilution of 1:400 and CoraLite®488-Conjugated Goat Anti-Rabbit IgG(H+L) (SA00013-2), CoraLite®594 ARL13B antibody (CL594-17711, red).