

For Research Use Only

ZIP7 Polyclonal antibody

Catalog Number: 19429-1-AP

Featured Product

21 Publications



Basic Information

Catalog Number:

19429-1-AP

Size:

400 µg/ml

Source:

Rabbit

Isotype:

IgG

Immunogen Catalog Number:

AG13762

GenBank Accession Number:

BC000645

GeneID (NCBI):

7922

UNIPROT ID:

Q92504

Full Name:

solute carrier family 39 (zinc transporter), member 7

Calculated MW:

469 aa, 50 kDa

Observed MW:

45-50 kDa, 56 kDa

Purification Method:

Antigen affinity purification

Recommended Dilutions:

WB 1:1000-1:8000

IP 0.5-4.0 µg for 1.0-3.0 mg of total protein lysate

IHC 1:20-1:200

IF/ICC 1:50-1:500

Applications

Tested Applications:

WB, IHC, IF/ICC, IP, ELISA

Cited Applications:

WB, IHC, IF

Species Specificity:

human, mouse, rat

Cited Species:

human, mouse, rat

Note-IHC: suggested antigen retrieval with TE buffer pH 9.0; (*) Alternatively, antigen retrieval may be performed with citrate buffer pH 6.0

Positive Controls:

WB : HepG2 cells, HeLa cells

IP : mouse brain tissue,

IHC : human kidney tissue, human breast cancer tissue

IF/ICC : HEK-293 cells,

Background Information

ZIP7 is a functional zinc transporter transporting zinc from the Golgi apparatus to the cytoplasm of the cell. ZIP7 is post-translationally regulated by CK2-mediated phosphorylation. This ZIP7 phosphorylation results in zinc release from intracellular stores, which activates multiple tyrosine kinases and regulate cell survival and proliferation. Dual bands of 50 kDa and 56 kDa detected by this antibody may represent the native and phosphorylated forms of ZIP7, respectively. (PMID: 28232492, 28205653)

Notable Publications

Author	Pubmed ID	Journal	Application
Astrid Fauster	30237509	Cell Death Differ	WB
Silvia Ziliotto	31483418	Metallomics	WB
Johanna Ollig	30448545	J Nutr Biochem	WB

Storage

Storage:

Store at -20°C. Stable for one year after shipment.

Storage Buffer:

PBS with 0.02% sodium azide and 50% glycerol pH 7.3.

Aliquoting is unnecessary for -20°C storage

For technical support and original validation data for this product please contact:

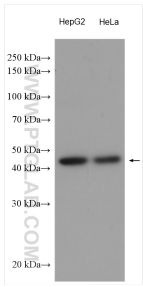
T: 4006900926

E: Proteintech-CN@ptglab.com

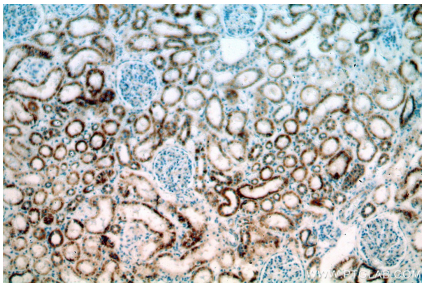
W: ptgcn.com

This product is exclusively available under Proteintech Group brand and is not available to purchase from any other manufacturer.

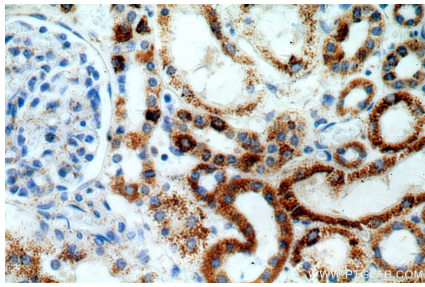
Selected Validation Data



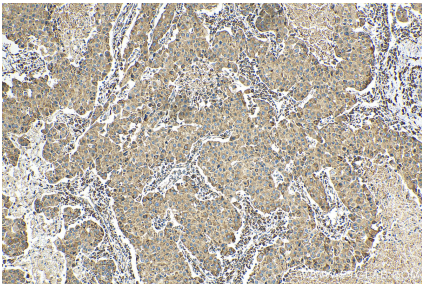
Various lysates were subjected to SDS PAGE followed by western blot with 19429-1-AP (ZIP7 antibody) at dilution of 1:4000 incubated at room temperature for 1.5 hours.



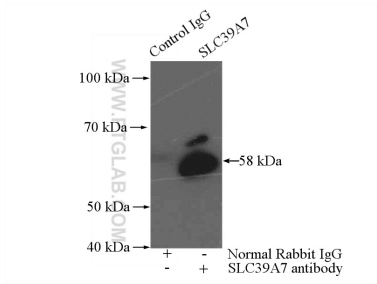
Immunohistochemical analysis of paraffin-embedded human kidney using 19429-1-AP (ZIP7 antibody) at dilution of 1:100 (under 10x lens).



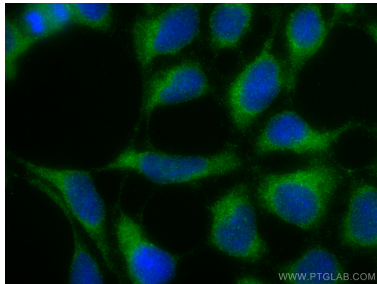
Immunohistochemical analysis of paraffin-embedded human kidney using 19429-1-AP (ZIP7 antibody) at dilution of 1:100 (under 40x lens).



Immunohistochemical analysis of paraffin-embedded human breast cancer tissue slide using 19429-1-AP (ZIP7 antibody) at dilution of 1:200 (under 10x lens). Heat mediated antigen retrieval with Tris-EDTA buffer (pH 9.0).



IP result of anti-ZIP7 (IP:19429-1-AP, 4ug; Detection:19429-1-AP 1:500) with mouse brain tissue lysate 4000ug.



Immunofluorescent analysis of (-20°C Ethanol) fixed HEK-293 cells using ZIP7 antibody (19429-1-AP) at dilution of 1:200 and CoraLite®488-Conjugated Goat Anti-Rabbit IgG(H+L).