

# SEZ6L2 Polyclonal antibody

Catalog Number: 19428-1-AP

## Basic Information

**Catalog Number:**

19428-1-AP

**Size:**

600 µg/ml

**Source:**

Rabbit

**Isotype:**

IgG

**Immunogen Catalog Number:**

AG13760

**GenBank Accession Number:**

BC000567

**GeneID (NCBI):**

26470

**UNIPROT ID:**

Q6UXD5

**Full Name:**

seizure related 6 homolog (mouse)-like 2

**Calculated MW:**

910 aa, 98 kDa

**Observed MW:**

150 kDa

**Purification Method:**

Antigen affinity purification

**Recommended Dilutions:**

WB 1:1000-1:4000

## Applications

**Tested Applications:**

WB, ELISA

**Species Specificity:**

human, mouse, rat

**Positive Controls:**

WB : mouse brain tissue, rat brain tissue

## Background Information

Seizure 6-like protein 2 (SEZ6L2) is a type 1 transmembrane protein predominantly expressed in the brain. It belongs to the seizure-related gene 6 (SEZ6) family, which contains SEZ6, SEZ6L and SEZ6L2. SEZ6 family members have been shown to influence synapse numbers and dendritic morphology and are linked to various neurological and psychiatric disorders (PMID: 33936031). SEZ6L2 is a part of the AMPA receptor and acts as a scaffolding protein to link GluR1 to adducin (PMID: 29032200). Overexpression of SEZ6L2 has been reported in a variety of cancers, including lung cancer, hepatocellular carcinoma, thyroid carcinoma, cholangiocarcinoma (PMID: 16863507; 35117286; 35284305; 32148567). SEZ6L2 can be glycosylated and the apparent molecular weight can be raised to 150-170 kDa (PMID: 26698217; 24272587).

## Storage

**Storage:**

Store at -20°C. Stable for one year after shipment.

**Storage Buffer:**

PBS with 0.02% sodium azide and 50% glycerol pH 7.3.

Aliquoting is unnecessary for -20°C storage

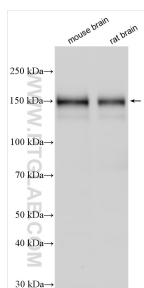
For technical support and original validation data for this product please contact:

T: 4006900926

E: [Proteintech-CN@ptglab.com](mailto:Proteintech-CN@ptglab.com)W: [ptgcn.com](http://ptgcn.com)

This product is exclusively available under Proteintech Group brand and is not available to purchase from any other manufacturer.

## Selected Validation Data



Various lysates were subjected to SDS PAGE followed by western blot with 19428-1-AP (SEZ6L2 antibody) at dilution of 1:2000 incubated at room temperature for 1.5 hours.