

# PIH1D1 Polyclonal antibody

Catalog Number: 19427-1-AP

10 Publications

## Basic Information

## Catalog Number:

19427-1-AP

## Size:

850 µg/ml

## Source:

Rabbit

## Isotype:

IgG

## Immunogen Catalog Number:

AG13759

## GenBank Accession Number:

BC001108

## GeneID (NCBI):

55011

## UNIPROT ID:

Q9NWS0

## Full Name:

PIH1 domain containing 1

## Calculated MW:

290 aa, 32 kDa

## Observed MW:

39 kDa

## Purification Method:

Antigen affinity purification

## Recommended Dilutions:

WB 1:1000-1:6000

IP 0.5-4.0 µg for 1.0-3.0 mg of total protein lysate

IHC 1:20-1:200

IF/ICC 1:10-1:100

## Applications

## Tested Applications:

WB, IHC, IF/ICC, IP, ELISA

## Cited Applications:

WB, IHC, CoIP

## Species Specificity:

human, mouse, rat

## Cited Species:

human, mouse, rat

**Note-IHC: suggested antigen retrieval with TE buffer pH 9.0; (\*) Alternatively, antigen retrieval may be performed with citrate buffer pH 6.0**

## Positive Controls:

**WB:** A431 cells, human testis tissue, human uterus tissue, mouse eye tissue, HeLa cells, mouse ovary tissue, mouse testis tissue, rat testis tissue

**IP:** HeLa cells,

**IHC:** human lung tissue, human ovary tissue

**IF/ICC:** HeLa cells,

## Background Information

PIH1D1 (PIH1 domain-containing protein 1; also known as PIH1 or NOP17), is a ortholog of the yeast nucleolar protein NOP17. PIH1D1 is a conserved subunit of the R2TP complex participating in the assembly of snoRNP and RNA polymerase II complexes. PIH1D1 may also function as a novel modulator of apoptosis pathway.

## Notable Publications

Author	Pubmed ID	Journal	Application
Yukiko Imai	28527011	Chromosoma	WB
Yoann Abel	35150569	Nucleic Acids Res	WB, CoIP
Paul Yenerall	31883965	Cell Chem Biol	WB

## Storage

## Storage:

Store at -20°C. Stable for one year after shipment.

## Storage Buffer:

PBS with 0.02% sodium azide and 50% glycerol pH 7.3.

Aliquoting is unnecessary for -20°C storage

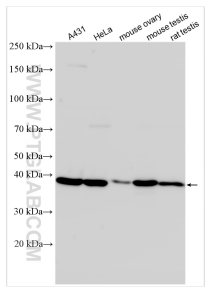
For technical support and original validation data for this product please contact:

T: 4006900926

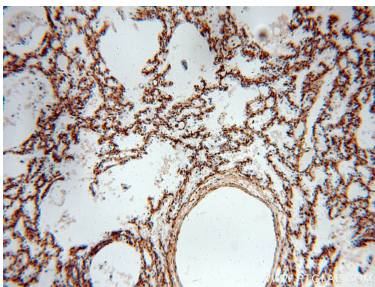
E: [Proteintech-CN@ptglab.com](mailto:Proteintech-CN@ptglab.com)W: [ptgcn.com](http://ptgcn.com)

**This product is exclusively available under Proteintech Group brand and is not available to purchase from any other manufacturer.**

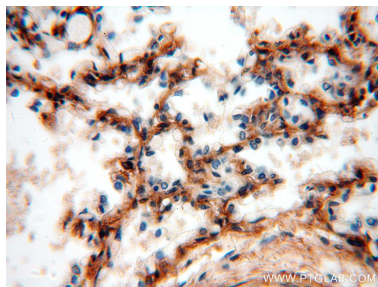
Selected Validation Data



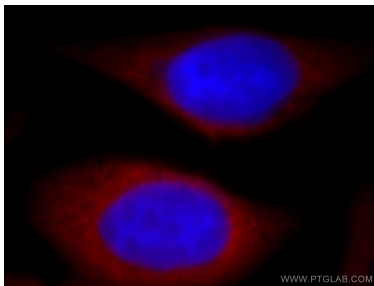
Various lysates were subjected to SDS PAGE followed by western blot with 19427-1-AP (PIH1D1 antibody) at dilution of 1:3000 incubated at room temperature for 1.5 hours.



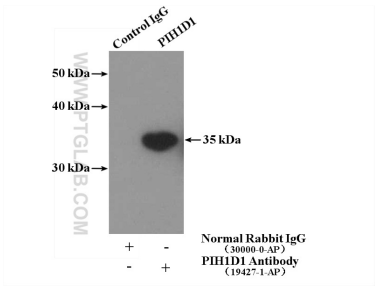
Immunohistochemical analysis of paraffin-embedded human lung using 19427-1-AP (PIH1D1 antibody) at dilution of 1:100 (under 10x lens).



Immunohistochemical analysis of paraffin-embedded human lung using 19427-1-AP (PIH1D1 antibody) at dilution of 1:100 (under 40x lens).



Immunofluorescent analysis of HeLa cells, using PIH1D1 antibody 19427-1-AP at 1:25 dilution and Rhodamine-labeled goat anti-rabbit IgG (red). Blue pseudocolor = DAPI (fluorescent DNA dye).



IP result of anti-PIH1D1 (IP:19427-1-AP, 4ug; Detection:19427-1-AP 1:1000) with HeLa cells lysate 1200ug.