

For Research Use Only

# TLNRD1 Polyclonal antibody, PBS Only

Catalog Number: 19421-1-PBS



## Basic Information

<b>Catalog Number:</b> 19421-1-PBS	<b>GenBank Accession Number:</b> BC001373	<b>Purification Method:</b> Antigen affinity purification
<b>Concentration:</b> 1 mg/ml	<b>GeneID (NCBI):</b> 59274	
<b>Source:</b> Rabbit	<b>UNIPROT ID:</b> Q9H1K6	
<b>Isotype:</b> IgG	<b>Full Name:</b> mesoderm development candidate 1	
<b>Immunogen Catalog Number:</b> AG13748	<b>Calculated MW:</b> 362 aa, 38 kDa	
	<b>Observed MW:</b> 37 kDa	

## Applications

**Tested Applications:**  
WB, Indirect ELISA

**Species Specificity:**  
human

## Background Information

TLNRD1 also known as MESDC1, is an  $\alpha$ -helical protein structurally homologous to talin R7R8. TLNRD1 is an actin binding protein that can promote the formation of filamentous pseudopodia and cell migration. TLNRD1 plays an important role in the construction of the cytoskeleton and the interaction between cells (PMID: 22179486).

## Storage

**Storage:**  
Store at  $-80^{\circ}\text{C}$ .  
**The product is shipped with ice packs. Upon receipt, store it immediately at  $-80^{\circ}\text{C}$**

**Storage Buffer:**  
PBS only, pH7.3

For technical support and original validation data for this product please contact:

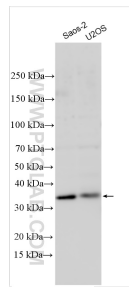
T: 4006900926

E: [Proteintech-CN@ptglab.com](mailto:Proteintech-CN@ptglab.com)

W: [ptgcn.com](http://ptgcn.com)

**This product is exclusively available under Proteintech Group brand and is not available to purchase from any other manufacturer.**

## Selected Validation Data



Various lysates were subjected to SDS PAGE followed by western blot with 19421-1-AP (TLNRD1 antibody) at dilution of 1:2000 incubated at room temperature for 1.5 hours. This data was developed using the same antibody clone with 19421-1-PBS in a different storage buffer formulation.