

For Research Use Only

TLNRD1 Polyclonal antibody

Catalog Number: 19421-1-AP



Basic Information

Catalog Number:

19421-1-AP

Concentration:

450 µg/ml

Source:

Rabbit

Isotype:

IgG

Immunogen Catalog Number:

AG13748

GenBank Accession Number:

BC001373

GeneID (NCBI):

59274

UNIPROT ID:

Q9H1K6

Full Name:

mesoderm development candidate 1

Calculated MW:

362 aa, 38 kDa

Observed MW:

37 kDa

Purification Method:

Antigen affinity purification

Recommended Dilutions:

WB 1:1000-1:4000

Applications

Tested Applications:

WB, ELISA

Species Specificity:

human

Positive Controls:

WB : Saos-2 cells, U2OS cells

Background Information

TLNRD1 also known as MESDC1, is an α -helical protein structurally homologous to talin R7R8. TLNRD1 is an actin binding protein that can promote the formation of filamentous pseudopodia and cell migration. TLNRD1 plays an important role in the construction of the cytoskeleton and the interaction between cells (PMID: 22179486).

Storage

Storage:

Store at -20°C. Stable for one year after shipment.

Storage Buffer:

PBS with 0.02% sodium azide and 50% glycerol, pH7.3

Aliquoting is unnecessary for -20°C storage

For technical support and original validation data for this product please contact:

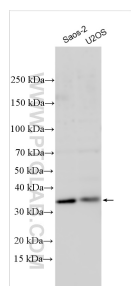
T: 4006900926

E: Proteintech-CN@ptglab.com

W: ptgcn.com

This product is exclusively available under Proteintech Group brand and is not available to purchase from any other manufacturer.

Selected Validation Data



Various lysates were subjected to SDS PAGE followed by western blot with 19421-1-AP (TLNRD1 antibody) at dilution of 1:2000 incubated at room temperature for 1.5 hours.