

For Research Use Only

ABHD14A Polyclonal antibody, PBS Only

Catalog Number: 19419-1-PBS



Basic Information

Catalog Number:

19419-1-PBS

Concentration:

1 mg/ml

Source:

Rabbit

Isotype:

IgG

Immunogen Catalog Number:

AG13744

GenBank Accession Number:

BC002571

GeneID (NCBI):

25864

UNIPROT ID:

Q9BUJ0

Full Name:

abhydrolase domain containing 14A

Calculated MW:

271 aa, 30 kDa

Observed MW:

30-32 kDa

Purification Method:

Antigen affinity purification

Applications

Tested Applications:

WB, IF/ICC, IP, Indirect ELISA

Species Specificity:

human, mouse, rat

Background Information

Storage

Storage:

Store at -80°C.

The product is shipped with ice packs. Upon receipt, store it immediately at -80°C

Storage Buffer:

PBS Only

For technical support and original validation data for this product please contact:

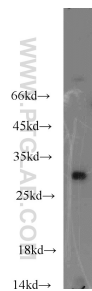
T: 4006900926

E: Proteintech-CN@ptglab.com

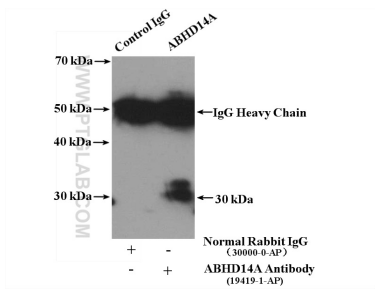
W: ptgcn.com

This product is exclusively available under Proteintech Group brand and is not available to purchase from any other manufacturer.

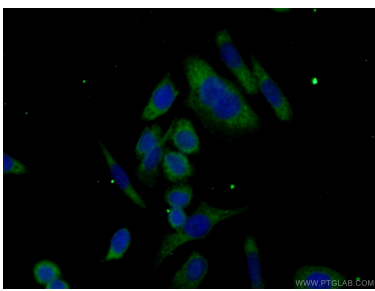
Selected Validation Data



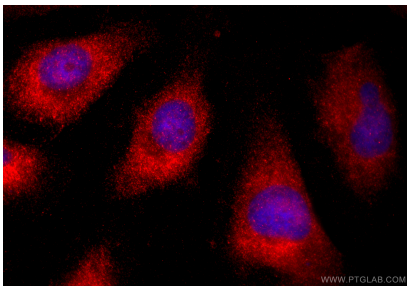
mouse kidney tissue were subjected to SDS PAGE followed by western blot with 19419-1-AP (ABHD14A antibody) at dilution of 1:300 incubated at room temperature for 1.5 hours. This data was developed using the same antibody clone with 19419-1-PBS in a different storage buffer formulation.



IP result of anti-ABHD14A (IP:19419-1-AP, 4ug; Detection:19419-1-AP 1:300) with mouse kidney tissue lysate 4000ug. This data was developed using the same antibody clone with 19419-1-PBS in a different storage buffer formulation.



Immunofluorescent analysis of (-20°C Ethanol) fixed HeLa cells using 19419-1-AP (ABHD14A antibody) at dilution of 1:50 and Alexa Fluor 488-conjugated AffiniPure Goat Anti-Rabbit IgG(H+L). This data was developed using the same antibody clone with 19419-1-PBS in a different storage buffer formulation.



Immunofluorescent analysis of (-20°C Ethanol) fixed HeLa cells using ABHD14A antibody (19419-1-AP) at dilution of 1:400 and CoraLite®594-Conjugated Goat Anti-Rabbit IgG(H+L) (SA00013-4). This data was developed using the same antibody clone with 19419-1-PBS in a different storage buffer formulation.