

For Research Use Only

# HCFC1 Polyclonal antibody

Catalog Number: 19358-1-AP

2 Publications



## Basic Information

Catalog Number:

19358-1-AP

Concentration:

400 µg/ml

Source:

Rabbit

Isotype:

IgG

Immunogen Catalog Number:

AG6798

GenBank Accession Number:

BC063435

GeneID (NCBI):

3054

UNIPROT ID:

P51610

Full Name:

host cell factor C1 (VP16-accessory protein)

Calculated MW:

209 kDa

Observed MW:

230 kDa, 300 kDa

Purification Method:

Antigen affinity purification

Recommended Dilutions:

WB 1:500-1:2000

## Applications

Tested Applications:

WB, ELISA

Cited Applications:

WB, IF

Species Specificity:

human, mouse, rat

Cited Species:

human, mouse, rat

Positive Controls:

WB : HEK-293 cells, A431 cells, Jurkat cells

## Background Information

Host cell factor 1 (HCFC1), also known as HCF-1, is a transcriptional co-regulator with a proteolytic cleavage at the PRO repeats that could be cleaved by O-GlcNAc transferase (OGT) to produce a heterodimeric complex of HCFC1N and HCFC1C subunits (PMID: 23539139). HCFC1 was first identified in herpes simplex virus transcription while it lacks a DNA binding domain. HCFC1 is not a traditional transcription factor, it interacts with multiple protein including transcription factors to regulate many biological processes, such as cell proliferation, migration, cell death and mitochondrial biogenesis (PMID: 25281006). Mutation in HCFC1 was related to an X-linked recessive disease --- cblX with a complex clinical manifestation involved in error of metabolism, neurocognitive impairment and craniofacial abnormalities (PMID: 24011988; PMID: 25281006).

## Notable Publications

Author	Pubmed ID	Journal	Application
Erina Minato	31758567	Microbiol Immunol	IF
Yongjie Wei	39985193	Adv Sci (Weinh)	WB

## Storage

Storage:

Store at -20°C. Stable for one year after shipment.

Storage Buffer:

PBS with 0.02% sodium azide and 50% glycerol, pH7.3

Aliquoting is unnecessary for -20°C storage

For technical support and original validation data for this product please contact:

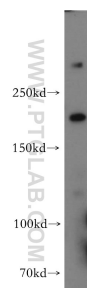
T: 4006900926

E: [Proteintech-CN@ptglab.com](mailto:Proteintech-CN@ptglab.com)

W: [ptgcn.com](http://ptgcn.com)

This product is exclusively available under Proteintech Group brand and is not available to purchase from any other manufacturer.

## Selected Validation Data



HEK-293 cells were subjected to SDS PAGE followed by western blot with 19358-1-AP (HCFC1 antibody) at dilution of 1:500 incubated at room temperature for 1.5 hours.