

For Research Use Only

Gastrokine 1 Polyclonal antibody

Catalog Number: 19344-1-AP **2 Publications**



Basic Information

Catalog Number: 19344-1-AP	GenBank Accession Number: BC059778	Purification Method: Antigen affinity purification
Size: 450 µg/ml	GeneID (NCBI): 56287	Recommended Dilutions: WB 1:1000-1:4000 IHC 1:20-1:200
Source: Rabbit	UNIPROT ID: Q9NS71	
Isotype: IgG	Full Name: gastrokine 1	
Immunogen Catalog Number: AG6091	Calculated MW: 22 kDa	
	Observed MW: 20-22 kDa	

Applications

Tested Applications: IHC, WB, ELISA	Positive Controls: WB : human stomach tissue, mouse stomach tissue IHC : human stomach tissue,
Cited Applications: WB, IHC	
Species Specificity: human, mouse	
Cited Species: human, mouse	
Note-IHC: suggested antigen retrieval with TE buffer pH 9.0; (*) Alternatively, antigen retrieval may be performed with citrate buffer pH 6.0	

Background Information

Gastrokine 1 (GKN1), a stomach-specific protein also known as 18 kDa antrum mucosa protein (AMP-18) or foveolin, belongs to the gastrokine family of gastric mucus cell-secreted proteins. The human GKN1 gene has been localized in a region of chromosome 2p13 of about 6 kb and contains 6 exons. GKN1 is expressed only in normal human stomach, but is absent from gastric adenocarcinomas, gastro-esophageal adenocarcinoma cell lines, and other normal and tumor gastro-intestinal tissues. GKN1 may play an important role in normal gastric function and may be a gastric tumour suppressor.

Notable Publications

Author	Pubmed ID	Journal	Application
Yanlei Guo	31657090	Helicobacter	WB, IHC
Anne-Marie C Overstreet	33947892	Sci Rep	WB

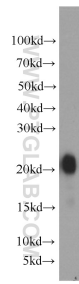
Storage

Storage:
Store at -20°C. Stable for one year after shipment.
Storage Buffer:
PBS with 0.02% sodium azide and 50% glycerol pH 7.3.
Aliquoting is unnecessary for -20°C storage

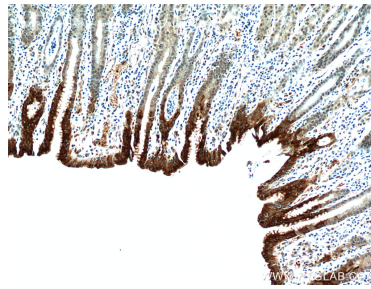
For technical support and original validation data for this product please contact:
T: 4006900926 E: Proteintech-CN@ptglab.com W: ptgcn.com

This product is exclusively available under Proteintech Group brand and is not available to purchase from any other manufacturer.

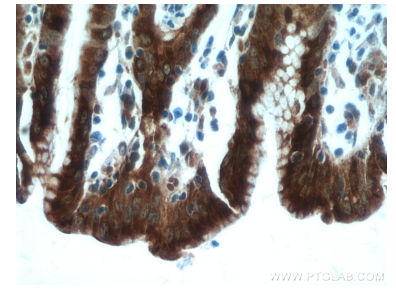
Selected Validation Data



human stomach tissue were subjected to SDS PAGE followed by western blot with 19344-1-AP (Gastrokine 1 antibody) at dilution of 1:2000 incubated at room temperature for 1.5 hours.



Immunohistochemical analysis of paraffin-embedded human stomach using 19344-1-AP (Gastrokine 1 antibody) at dilution of 1:100 (under 10x lens).



Immunohistochemical analysis of paraffin-embedded human stomach using 19344-1-AP (Gastrokine 1 antibody) at dilution of 1:100 (under 40x lens).