

For Research Use Only

# LCA5 Polyclonal antibody

Catalog Number: 19333-1-AP

8 Publications



## Basic Information

Catalog Number:

19333-1-AP

Concentration:

850 µg/ml

Source:

Rabbit

Isotype:

IgG

Immunogen Catalog Number:

AG5140

GenBank Accession Number:

BC050327

GeneID (NCBI):

167691

UNIPROT ID:

Q86VQ0

Full Name:

Leber congenital amaurosis 5

Calculated MW:

693 aa, 80 kDa

Observed MW:

80 kDa

Purification Method:

Antigen affinity purification

Recommended Dilutions:

WB 1:200-1:1000

## Applications

Tested Applications:

WB, ELISA

Cited Applications:

WB, IF, CoIP

Species Specificity:

human

Cited Species:

human, mouse, pig

Positive Controls:

WB : HeLa cells,

## Background Information

LCA5 (Leber congenital amaurosis 5), also named as C6orf152 or Lebercilin, is a 697 amino acids protein. LCA5 is widely expressed at the microtubules, centrosome, and primary cilia. Recent study showed that LCA5 was involved in the cause of congenital and early-onset retinal dystrophies (PMID: 24144451). The MW of this protein is 80 kDa, and this antibody specially recognises the 80 kDa protein.

## Notable Publications

Author	Pubmed ID	Journal	Application
Tamás Szaniszló	36114230	Sci Rep	WB,IF,CoIP
Marcus Karlstetter	24833722	Hum Mol Genet	IF
Ji Yun Song	29673930	Mol Ther	

## Storage

Storage:

Store at -20°C. Stable for one year after shipment.

Storage Buffer:

PBS with 0.02% sodium azide and 50% glycerol pH 7.3.

Aliquoting is unnecessary for -20°C storage

For technical support and original validation data for this product please contact:

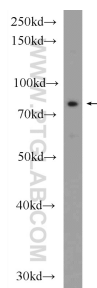
T: 4006900926

E: [Proteintech-CN@ptglab.com](mailto:Proteintech-CN@ptglab.com)

W: [ptgcn.com](http://ptgcn.com)

This product is exclusively available under Proteintech Group brand and is not available to purchase from any other manufacturer.

## Selected Validation Data



HeLa cells were subjected to SDS PAGE followed by western blot with 19333-1-AP (LCA5 Antibody) at dilution of 1:300 incubated at room temperature for 1.5 hours.