

CLCA2 Polyclonal antibody

Catalog Number: 19273-1-AP

4 Publications

Basic Information

Catalog Number:

19273-1-AP

Size:

400 µg/ml

Source:

Rabbit

Isotype:

IgG

Immunogen Catalog Number:

AG5914

GenBank Accession Number:

BC041096

GeneID (NCBI):

9635

UNIPROT ID:

Q9UQC9

Full Name:

chloride channel accessory 2

Calculated MW:

104 kDa

Observed MW:

141 kDa, 35-40 kDa

Purification Method:

Antigen affinity purification

Recommended Dilutions:

WB 1:500-1:1000

IHC 1:20-1:200

Applications

Tested Applications:

IHC, WB, ELISA

Cited Applications:

WB, IP

Species Specificity:

human, mouse

Cited Species:

human, mouse

Note-IHC: suggested antigen retrieval with TE buffer pH 9.0; (*) Alternatively, antigen retrieval may be performed with citrate buffer pH 6.0

Positive Controls:

WB : mouse lung tissue, COLO 320 cells

IHC : human oesophagus tissue,

Background Information

Notable Publications

Author	Pubmed ID	Journal	Application
Tinghui Shao	34869368	Front Cell Dev Biol	WB, IP
Xinming Wang	34805326	Front Cardiovasc Med	WB
Yali Fan	38528613	J Ovarian Res	WB

Storage

Storage:

Store at -20°C. Stable for one year after shipment.

Storage Buffer:

PBS with 0.02% sodium azide and 50% glycerol pH 7.3.

Aliquoting is unnecessary for -20°C storage

For technical support and original validation data for this product please contact:

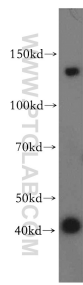
T: 4006900926

E: Proteintech-CN@ptglab.com

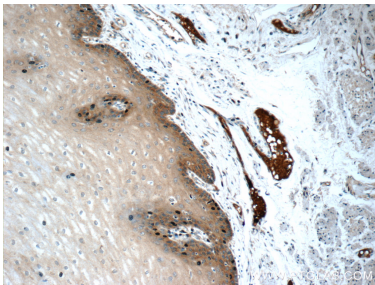
W: ptgcn.com

This product is exclusively available under Proteintech Group brand and is not available to purchase from any other manufacturer.

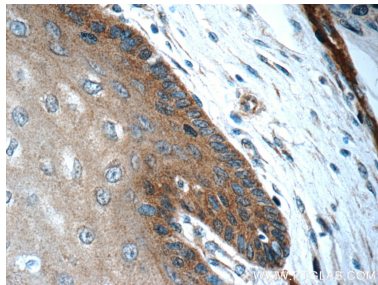
Selected Validation Data



mouse lung tissue were subjected to SDS PAGE followed by western blot with 19273-1-AP (CLCA2 antibody) at dilution of 1:300 incubated at room temperature for 1.5 hours.



Immunohistochemical analysis of paraffin-embedded human oesophagus tissue slide using 19273-1-AP (CLCA2 Antibody) at dilution of 1:50 (under 10x lens).



Immunohistochemical analysis of paraffin-embedded human oesophagus tissue slide using 19273-1-AP (CLCA2 Antibody) at dilution of 1:50 (under 40x lens).