

For Research Use Only

KIF18A Polyclonal antibody

Catalog Number: 19245-1-AP

Featured Product

13 Publications



Basic Information

Catalog Number:

19245-1-AP

Size:

700 µg/ml

Source:

Rabbit

Isotype:

IgG

Immunogen Catalog Number:

AG6166

GenBank Accession Number:

BC048347

GeneID (NCBI):

81930

UNIPROT ID:

Q8NI77

Full Name:

kinesin family member 18A

Calculated MW:

102 kDa

Observed MW:

102 kDa

Purification Method:

Antigen affinity purification

Recommended Dilutions:

WB 1:500-1:2000

IP 0.5-4.0 µg for 1.0-3.0 mg of total protein lysate

IHC 1:50-1:500

Applications

Tested Applications:

WB, IP, IHC, ELISA

Cited Applications:

WB, IP, IF, IHC

Species Specificity:

human

Cited Species:

human, mouse

Note-IHC: suggested antigen retrieval with TE buffer pH 9.0; (*) Alternatively, antigen retrieval may be performed with citrate buffer pH 6.0

Positive Controls:

WB : Jurkat cells, HeLa cells

IP : Jurkat cells,

IHC : human colon cancer tissue, human liver tissue, human breast cancer tissue

Background Information

KIF18A belongs to the Kinesin family. KIF18A binds to microtubules and moves along them using energy from ATP hydrolysis. KIF18A is related to the localization of membrane organelles and protein complexes, as well as the maintenance of microtubule dynamics and mitosis. KIF18A expression is low in normal tissues and high in solid tumors, including breast cancer, hepatocellular carcinoma and lung adenocarcinoma, colorectal cancer, renal cell carcinoma, and head and neck squamous cell carcinoma. The molecular weight of KIF18A is 102 kDa (PMID: 36830695).

Notable Publications

Author	Pubmed ID	Journal	Application
Fu-Tao Chen	31772692	Dis Markers	WB
Weijia Liao	25431949	Oncotarget	IHC
Feng Tang	30459823	Cell Div	WB,IF

Storage

Storage:

Store at -20°C. Stable for one year after shipment.

Storage Buffer:

PBS with 0.02% sodium azide and 50% glycerol pH 7.3.

Aliquoting is unnecessary for -20°C storage

For technical support and original validation data for this product please contact:

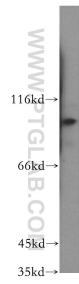
T: 4006900926

E: Proteintech-CN@ptglab.com

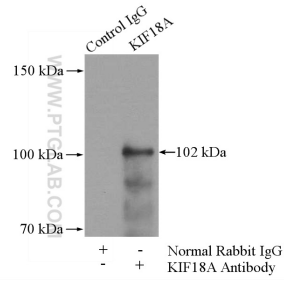
W: ptgcn.com

This product is exclusively available under Proteintech Group brand and is not available to purchase from any other manufacturer.

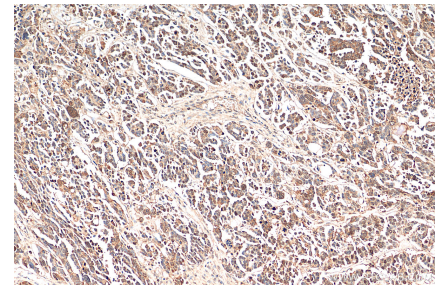
Selected Validation Data



Jurkat cells were subjected to SDS PAGE followed by western blot with 19245-1-AP (KIF18A antibody) at dilution of 1:500 incubated at room temperature for 1.5 hours.



IP result of anti-KIF18A (IP:19245-1-AP, 4ug; Detection:19245-1-AP 1:500) with Jurkat cells lysate 2400ug.



Immunohistochemical analysis of paraffin-embedded human colon cancer tissue slide using 19245-1-AP (KIF18A antibody) at dilution of 1:200 (under 10x lens). Heat mediated antigen retrieval with Tris-EDTA buffer (pH 9.0).