

# ATN1 Polyclonal antibody

Catalog Number: 19243-1-AP

## Basic Information

Catalog Number: 19243-1-AP	GenBank Accession Number: BC051795	Purification Method: Antigen affinity purification
Size: 260 µg/ml	GeneID (NCBI): 1822	Recommended Dilutions: WB 1:200-1:1000 IHC 1:20-1:200
Source: Rabbit	UNIPROT ID: P54259	
Isotype: IgG	Full Name: atrophin 1	
Immunogen Catalog Number: AG5835	Calculated MW: 125 kDa Observed MW: 105-110 kDa	

## Applications

Tested Applications: IHC, WB, ELISA	Positive Controls: WB : mouse testis tissue, IHC : human ovary tissue, human testis tissue
Species Specificity: human, mouse	
<b>Note-IHC: suggested antigen retrieval with TE buffer pH 9.0; (*) Alternatively, antigen retrieval may be performed with citrate buffer pH 6.0</b>	

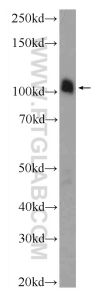
## Background Information

ATN1 also known as Atrophin-1 is a protein that in humans is encoded by the ATN1 gene. Dentatorubral pallidoluysian atrophy is a rare neurodegenerative disorder characterized by cerebellar ataxia, myoclonic epilepsy, choreoathetosis, and dementia. The disorder is related to the expansion of a trinucleotide repeat within this gene. The encoded protein includes a serine repeat and a region of alternating acidic and basic amino acids, as well as the variable glutamine repeat.

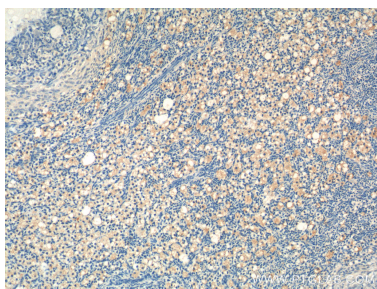
## Storage

**Storage:**  
Store at -20°C. Stable for one year after shipment.  
**Storage Buffer:**  
PBS with 0.02% sodium azide and 50% glycerol pH 7.3.  
Aliquoting is unnecessary for -20°C storage

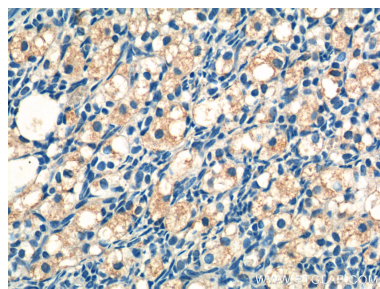
## Selected Validation Data



mouse testis tissue were subjected to SDS PAGE followed by western blot with 19243-1-AP (ATN1 Antibody) at dilution of 1:300 incubated at room temperature for 1.5 hours.



Immunohistochemical analysis of paraffin-embedded human ovary tissue slide using 19243-1-AP (ATN1 Antibody) at dilution of 1:50 (under 10x lens).



Immunohistochemical analysis of paraffin-embedded human ovary tissue slide using 19243-1-AP (ATN1 Antibody) at dilution of 1:50 (under 40x lens).