

For Research Use Only

NAT1 Polyclonal antibody

Catalog Number: 19188-1-AP

Featured Product

2 Publications



Basic Information

Catalog Number:

19188-1-AP

Size:

500 µg/ml

Source:

Rabbit

Isotype:

IgG

Immunogen Catalog Number:

AG6280

GenBank Accession Number:

BC047666

GeneID (NCBI):

9

UNIPROT ID:

P18440

Full Name:

N-acetyltransferase 1 (arylamine N-acetyltransferase)

Calculated MW:

34 kDa

Observed MW:

32-34 kDa

Purification Method:

Antigen affinity purification

Recommended Dilutions:

WB 1:500-1:1000

IHC 1:20-1:200

IF/ICC 1:10-1:100

Applications

Tested Applications:

WB, IHC, IF/ICC, ELISA

Cited Applications:

WB, ColP

Species Specificity:

human, mouse, rat

Cited Species:

human

Note-IHC: suggested antigen retrieval with TE buffer pH 9.0; (*) Alternatively, antigen retrieval may be performed with citrate buffer pH 6.0

Positive Controls:

WB : PC-3 cells, human placenta tissue, A375 cells

IHC : human breast cancer tissue,

IF/ICC : HeLa cells, HepG2 cells

Background Information

Notable Publications

Author	Pubmed ID	Journal	Application
Qiao Song	36243980	Nucleic Acids Res	WB, ColP
Rushi Liu	32793479	Front Oncol	WB

Storage

Storage:

Store at -20°C. Stable for one year after shipment.

Storage Buffer:

PBS with 0.02% sodium azide and 50% glycerol pH 7.3.

Aliquoting is unnecessary for -20°C storage

For technical support and original validation data for this product please contact:

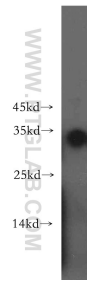
T: 4006900926

E: Proteintech-CN@ptglab.com

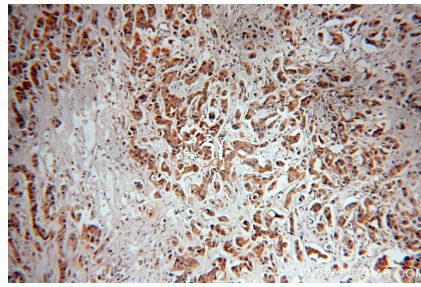
W: ptgcn.com

This product is exclusively available under Proteintech Group brand and is not available to purchase from any other manufacturer.

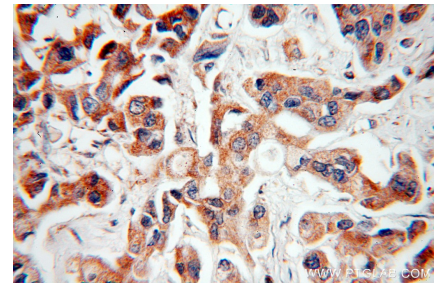
Selected Validation Data



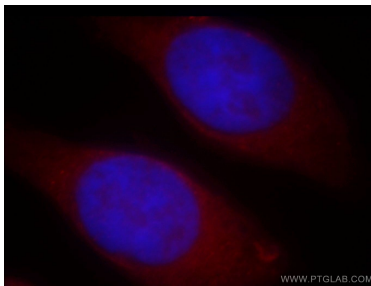
PC-3 cells were subjected to SDS PAGE followed by western blot with 19188-1-AP (NAT1 antibody) at dilution of 1:500 incubated at room temperature for 1.5 hours.



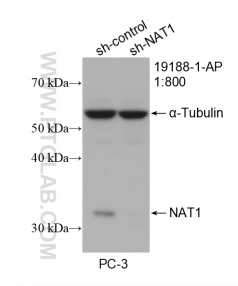
Immunohistochemical analysis of paraffin-embedded human breast cancer using 19188-1-AP (NAT1 antibody) at dilution of 1:100 (under 10x lens).



Immunohistochemical analysis of paraffin-embedded human breast cancer using 19188-1-AP (NAT1 antibody) at dilution of 1:100 (under 40x lens).



Immunofluorescent analysis of HeLa cells, using NAT1 antibody 19188-1-AP at 1:25 dilution and Rhodamine-labeled goat anti-rabbit IgG (red). Blue pseudocolor = DAPI (fluorescent DNA dye).



WB result of NAT1 antibody (19188-1-AP; 1:800; incubated at room temperature for 1.5 hours) with sh-Control and sh-NAT1 transfected PC-3 cells.