

For Research Use Only

RFC1 Polyclonal antibody

Catalog Number: 19159-1-AP

Featured Product



Basic Information

Catalog Number:

19159-1-AP

Concentration:

450 ug/ml

Source:

Rabbit

Isotype:

IgG

Immunogen Catalog Number:

AG13585

GenBank Accession Number:

BC051751

GeneID (NCBI):

5981

UNIPROT ID:

P35251

Full Name:

replication factor C (activator 1) 1,

145kDa

Calculated MW:

128 kDa

Observed MW:

128-150 kDa

Purification Method:

Antigen affinity purification

Recommended Dilutions:

WB 1:500-1:3000

Applications

Tested Applications:

WB, ELISA

Species Specificity:

human

Positive Controls:

WB : Jurkat cells, HeLa cells

Background Information

Replication factor C subunit 1 (RFC1) is a pentameric DNA polymerase accessory protein involved in DNA replication and repair (PMID: 10051561). It was reported as a cause of cerebellar ataxia with neuropathy and vestibular areflexia syndrome (CANVAS) (PMID: 30926972).

Storage

Storage:

Store at -20°C. Stable for one year after shipment.

Storage Buffer:

PBS with 0.02% sodium azide and 50% glycerol pH 7.3.

Aliquoting is unnecessary for -20°C storage

For technical support and original validation data for this product please contact:

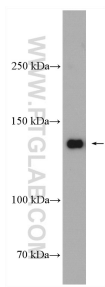
T: 4006900926

E: Proteintech-CN@ptglab.com

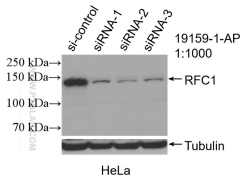
W: ptgcn.com

This product is exclusively available under Proteintech Group brand and is not available to purchase from any other manufacturer.

Selected Validation Data



Jurkat cells were subjected to SDS PAGE followed by western blot with 19159-1-AP (RFC1 antibody) at dilution of 1:1500 incubated at room temperature for 1.5 hours.



WB result of RFC1 antibody (19159-1-AP; 1:1000; incubated at room temperature for 1.5 hours) with sh-Control and sh-RFC1 transfected HeLa cells.