

For Research Use Only

# CDK6 Polyclonal antibody

Catalog Number: 19117-1-AP

Featured Product

17 Publications



## Basic Information

### Catalog Number:

19117-1-AP

### Concentration:

400 µg/ml

### Source:

Rabbit

### Isotype:

IgG

### Immunogen Catalog Number:

AG5600

### GenBank Accession Number:

BC027989

### GeneID (NCBI):

1021

### UNIPROT ID:

Q00534

### Full Name:

cyclin-dependent kinase 6

### Calculated MW:

326 aa, 36 kDa

### Observed MW:

36-40 kDa

### Purification Method:

Antigen affinity purification

### Recommended Dilutions:

WB 1:1000-1:4000

IP 0.5-4.0 µg for 1.0-3.0 mg of total protein lysate

IHC 1:50-1:500

IF/ICC 1:200-1:800

## Applications

### Tested Applications:

WB, IHC, IF/ICC, FC (Intra), IP, ELISA

### Cited Applications:

WB, IHC

### Species Specificity:

human, mouse, rat

### Cited Species:

human, mouse, rat

**Note-IHC: suggested antigen retrieval with TE buffer pH 9.0; (\*) Alternatively, antigen retrieval may be performed with citrate buffer pH 6.0**

### Positive Controls:

**WB:** HEK-293 cells, HeLa cells, Jurkat cells, HepG2 cells, K-562 cells, HSC-T6 cells

**IP:** Jurkat cells,

**IHC:** human lung cancer tissue, human gliomas tissue, human endometrial cancer tissue

**IF/ICC:** HeLa cells,

## Background Information

CDK6(Cyclin-dependent kinase 6) is involved in initiation and maintenance of cell cycle exit during cell differentiation and it prevents cell proliferation and regulates negatively cell differentiation, but is required for the proliferation of specific cell types. The molecular weight of CDK6 is 36-40 kDa (PMID: 23563707, 8114739).

## Notable Publications

Author	Pubmed ID	Journal	Application
Chiao-Yun Lin	34885073	Cancers (Basel)	WB
Zhifeng Lin	25941902	Cancer Biother Radiopharm	WB
DeLong Meng	25669971	Oncotarget	WB

## Storage

### Storage:

Store at -20°C. Stable for one year after shipment.

### Storage Buffer:

PBS with 0.02% sodium azide and 50% glycerol pH 7.3.

Aliquoting is unnecessary for -20°C storage

For technical support and original validation data for this product please contact:

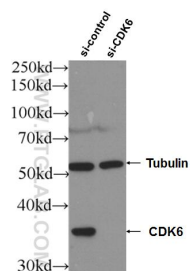
T: 4006900926

E: [Proteintech-CN@ptglab.com](mailto:Proteintech-CN@ptglab.com)

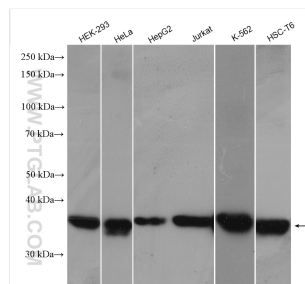
W: [ptgcn.com](http://ptgcn.com)

**This product is exclusively available under Proteintech Group brand and is not available to purchase from any other manufacturer.**

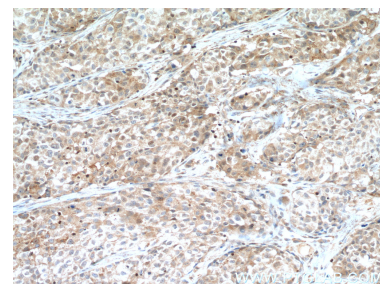
## Selected Validation Data



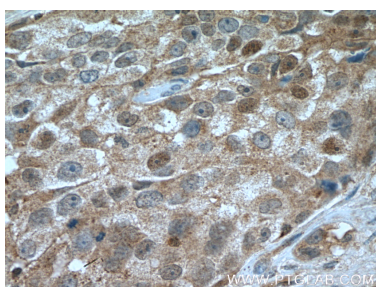
WB result of CDK6 antibody (19117-1-AP; 1:2000; incubated at room temperature for 1.5 hours) with sh-Control and sh-CDK6 transfected HeLa cells.



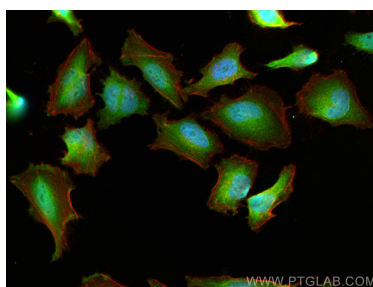
Various lysates were subjected to SDS PAGE followed by western blot with 19117-1-AP (CDK6 antibody) at dilution of 1:2000 incubated at room temperature for 1.5 hours.



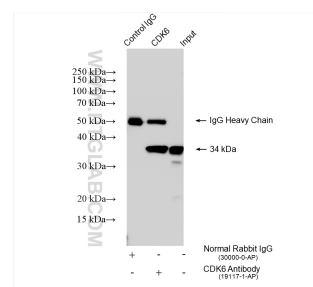
Immunohistochemical analysis of paraffin-embedded human lung cancer tissue slide using 19117-1-AP (CDK6 antibody) at dilution of 1:200 (under 10x lens. Heat mediated antigen retrieval with Tris-EDTA buffer (pH 9.0).



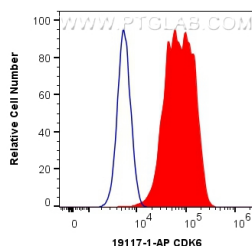
Immunohistochemical analysis of paraffin-embedded human lung cancer tissue slide using 19117-1-AP (CDK6 antibody) at dilution of 1:200 (under 40x lens. Heat mediated antigen retrieval with Tris-EDTA buffer (pH 9.0).



Immunofluorescent analysis of (4% PFA) fixed HeLa cells using CDK6 antibody (19117-1-AP) at dilution of 1:400 and CoraLite®488-Conjugated Goat Anti-Rabbit IgG(H+L), CL594-Phalloidin (red).



IP result of anti-CDK6 (IP:19117-1-AP, 4ug; Detection:19117-1-AP 1:1000) with Jurkat cells lysate 1960 ug.



1X10<sup>6</sup> HeLa cells were intracellularly stained with 0.4 ug Anti-Human CDK6 (19117-1-AP) and CoraLite®488-Conjugated Goat Anti-Rabbit IgG(H+L) at dilution 1:1000 (red), or 0.4 ug Isotype Control. Cells were fixed with 4% PFA and permeabilized with Flow Cytometry Perm Buffer (PF00011-C).