

For Research Use Only

# SNTB2 Polyclonal antibody, PBS Only

Catalog Number:19027-1-PBS



## Basic Information

Catalog Number:

19027-1-PBS

Size:

1 mg/ml

Source:

Rabbit

Isotype:

IgG

Immunogen Catalog Number:

AG13504

GenBank Accession Number:

BC048215

GeneID (NCBI):

6645

UNIPROT ID:

Q13425

Full Name:

syntrophin, beta 2 (dystrophin-associated protein A1, 59kDa, basic component 2)

Calculated MW:

540 aa, 58 kDa

Observed MW:

50-60 kDa

Purification Method:

Antigen affinity purification

## Applications

Tested Applications:

WB, Indirect ELISA

Species Specificity:

human, mouse, rat

## Background Information

Syntrophin beta 2(SNTB2) also known as SNT3 and SNTL, belongs to the syntrophin family. SNTB2 is a peripheral membrane protein associated with dystrophin and antityotrophin-associated protein complexes.

## Storage

Storage:

Store at -80°C.

**The product is shipped with ice packs. Upon receipt, store it immediately at -80°C**

Storage Buffer:

PBS Only

For technical support and original validation data for this product please contact:

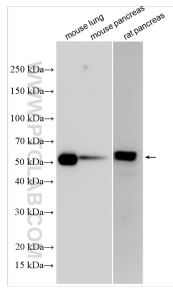
T: 4006900926

E: [Proteintech-CN@ptglab.com](mailto:Proteintech-CN@ptglab.com)

W: [ptgcn.com](http://ptgcn.com)

**This product is exclusively available under Proteintech Group brand and is not available to purchase from any other manufacturer.**

## Selected Validation Data



Various lysates were subjected to SDS PAGE followed by western blot with 19027-1-AP (SNTB2 antibody) at dilution of 1:6000 incubated at room temperature for 1.5 hours. This data was developed using the same antibody clone with 19027-1-PBS in a different storage buffer formulation.