

For Research Use Only

# GUCY1B3 Polyclonal antibody

Catalog Number: 19011-1-AP

Featured Product

6 Publications



## Basic Information

**Catalog Number:**

19011-1-AP

**Size:**

750 µg/ml

**Source:**

Rabbit

**Isotype:**

IgG

**Immunogen Catalog Number:**

AG5196

**GenBank Accession Number:**

BC047620

**GeneID (NCBI):**

2983

**UNIPROT ID:**

Q02153

**Full Name:**

guanylate cyclase 1, soluble, beta 3

**Calculated MW:**

71 kDa

**Observed MW:**

67-71 kDa

**Purification Method:**

Antigen affinity purification

**Recommended Dilutions:**

WB 1:1000-1:4000

IP 0.5-4.0 µg for 1.0-3.0 mg of total protein lysate

IHC 1:50-1:500

IF 1:10-1:100

## Applications

**Tested Applications:**

IF/ICC, IHC, IP, WB, ELISA

**Cited Applications:**

IHC, WB

**Species Specificity:**

human, mouse, rat

**Cited Species:**

human, mouse, rat

**Note-IHC: suggested antigen retrieval with TE buffer pH 9.0; (\*) Alternatively, antigen retrieval may be performed with citrate buffer pH 6.0**

**Positive Controls:**

**WB:** human placenta tissue, mouse lung tissue, rat lung tissue

**IP:** human placenta tissue,

**IHC:** mouse brain tissue, human lung cancer tissue

**IF:** HeLa cells, MCF-7 cells

## Background Information

### Notable Publications

Author	Pubmed ID	Journal	Application
Andrea de la Fuente-Alonso	33976159	Nat Commun	WB
Catarina Rippe	28465505	Sci Rep	WB, IHC
Baoyi Zhu	28285351	Cell Tissue Res	WB

## Storage

**Storage:**

Store at -20°C. Stable for one year after shipment.

**Storage Buffer:**

PBS with 0.02% sodium azide and 50% glycerol pH 7.3.

Aliquoting is unnecessary for -20°C storage

For technical support and original validation data for this product please contact:

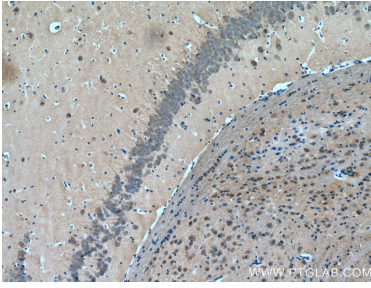
T: 4006900926

E: [Proteintech-CN@ptglab.com](mailto:Proteintech-CN@ptglab.com)

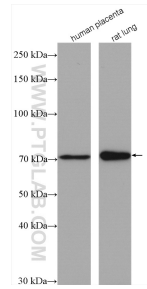
W: [ptgcn.com](http://ptgcn.com)

**This product is exclusively available under Proteintech Group brand and is not available to purchase from any other manufacturer.**

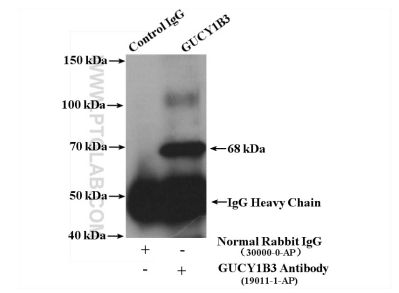
## Selected Validation Data



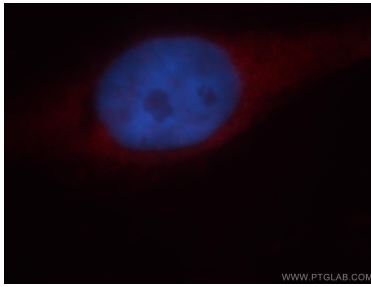
Immunohistochemical analysis of paraffin-embedded mouse brain tissue slide using 19011-1-AP (GUCY1B3 antibody) at dilution of 1:200 (under 10x lens). Heat mediated antigen retrieval with Tris-EDTA buffer (pH 9.0).



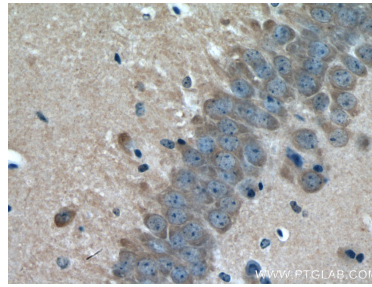
Various lysates were subjected to SDS PAGE followed by western blot with 19011-1-AP (GUCY1B3 antibody) at dilution of 1:2000 incubated at room temperature for 1.5 hours.



IP result of anti-GUCY1B3 (IP:19011-1-AP, 4ug; Detection:19011-1-AP 1:500) with human placenta tissue lysate 2600 ug.



Immunofluorescent analysis of HeLa cells, using GUCY1B3 antibody 19011-1-AP at 1:25 dilution and Rhodamine-labeled goat anti-rabbit IgG (red). Blue pseudocolor = DAPI (fluorescent DNA dye).



Immunohistochemical analysis of paraffin-embedded mouse brain tissue slide using 19011-1-AP (GUCY1B3 antibody) at dilution of 1:200 (under 40x lens). Heat mediated antigen retrieval with Tris-EDTA buffer (pH 9.0).