

# KIAA1468 Polyclonal antibody

Catalog Number: 18993-1-AP

## Basic Information

**Catalog Number:**

18993-1-AP

**Size:**

350 µg/ml

**Source:**

Rabbit

**Isotype:**

IgG

**GenBank Accession Number:**

NM\_020854

**GeneID (NCBI):**

57614

**UNIPROT ID:**

Q9P260

**Full Name:**

KIAA1468

**Calculated MW:**

139 kDa

**Observed MW:**

100-135 kDa

**Purification Method:**

Antigen affinity purification

**Recommended Dilutions:**

WB 1:500-1:1000

IP 0.5-4.0 µg for 1.0-3.0 mg of total protein lysate

IHC 1:50-1:500

## Applications

**Tested Applications:**

IHC, IP, WB, ELISA

**Species Specificity:**

human, mouse, rat

**Note-IHC: suggested antigen retrieval with TE buffer pH 9.0; (\*) Alternatively, antigen retrieval may be performed with citrate buffer pH 6.0**

**Positive Controls:**

WB : mouse brain tissue,

IP : mouse brain tissue,

IHC : mouse kidney tissue,

## Background Information

RELCH/KIAA1468, which is a newly identified Rab11 effector protein, tethers the recycling endosomes (REs) and trans-Golgi network (TGN) membranes by binding TGN-localized oxysterol-binding protein (OSBP) and promotes OSBP-dependent nonvesicular cholesterol transport from REs to the TGN.

## Storage

**Storage:**

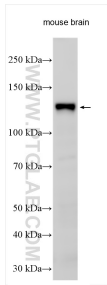
Store at -20°C. Stable for one year after shipment.

**Storage Buffer:**

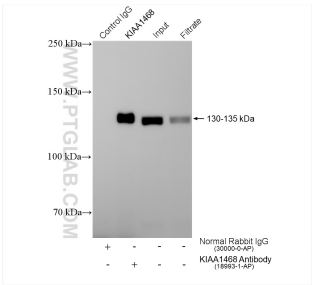
PBS with 0.02% sodium azide and 50% glycerol pH 7.3.

Aliquoting is unnecessary for -20°C storage

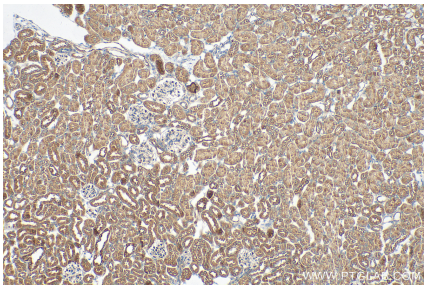
Selected Validation Data



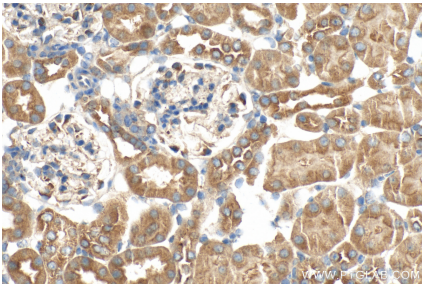
Various lysates were subjected to SDS PAGE followed by western blot with 18993-1-AP (KIAA1468 antibody) at dilution of 1:500 incubated at room temperature for 1.5 hours.



IP result of anti-KIAA1468 (IP:18993-1-AP, 4ug; Detection:18993-1-AP 1:500) with mouse brain tissue lysate 1280 ug.



Immunohistochemical analysis of paraffin-embedded mouse kidney tissue slide using 18993-1-AP (KIAA1468 antibody) at dilution of 1:200 (under 10x lens). Heat mediated antigen retrieval with Tris-EDTA buffer (pH 9.0).



Immunohistochemical analysis of paraffin-embedded mouse kidney tissue slide using 18993-1-AP (KIAA1468 antibody) at dilution of 1:200 (under 40x lens). Heat mediated antigen retrieval with Tris-EDTA buffer (pH 9.0).