

For Research Use Only

# GLI2-Specific Polyclonal antibody

Catalog Number: 18989-1-AP

Featured Product

53 Publications



## Basic Information

### Catalog Number:

18989-1-AP

### Size:

600 ug/ml

### Source:

Rabbit

### Isotype:

IgG

### GenBank Accession Number:

NM\_005270

### GeneID (NCBI):

2736

### UNIPROT ID:

P10070

### Full Name:

GLI family zinc finger 2

### Calculated MW:

168 kDa

### Observed MW:

167 kDa, 88 kDa

### Purification Method:

Antigen affinity purification

### Recommended Dilutions:

WB 1:500-1:2000

IHC 1:50-1:500

IF/ICC 1:50-1:500

## Applications

### Tested Applications:

WB, IHC, IF/ICC, ELISA

### Cited Applications:

WB, IHC, IF

### Species Specificity:

human, mouse, rat

### Cited Species:

human, mouse, rat, chameleo calyptatus

**Note-IHC: suggested antigen retrieval with TE buffer pH 9.0; (\*) Alternatively, antigen retrieval may be performed with citrate buffer pH 6.0**

### Positive Controls:

**WB** : mouse brain tissue, HEK-293 cells, human testis tissue

**IHC** : human kidney tissue,

**IF/ICC** : HepG2 cells, MCF-7 cells

## Background Information

GLI2, also named as THP, belongs to the GLI C2H2-type zinc-finger protein family. GLI2 play a role during embryogenesis. It binds to the DNA sequence 5'-GAACACCA-3' which is part of the TRE-2S regulatory element that augments the Tax-dependent enhancer of human T-cell leukemia virus type 1. It is implicated in the transduction of SHH signal. Mutation of GLI2 will cause of holoprosencephaly type 9 (HPE9). Four possible isoforms (hGli2a, b, g, and d) are formed by combinations of two independent alternative splicings, and all the isoforms could bind to a DNA motif, TRE2S. hGli2 a, b, g, and d. These isoforms encode 133-, 131-, 88-, and 86-kDa proteins, respectively.

## Notable Publications

Author	Pubmed ID	Journal	Application
Pai Pang	26427874	Biochem Biophys Res Commun	IHC, IF
Ivona Mateska	33090184	J Cell Biol	WB
Dengdian Wang	28870814	Biochem Biophys Res Commun	WB

## Storage

### Storage:

Store at -20°C. Stable for one year after shipment.

### Storage Buffer:

PBS with 0.02% sodium azide and 50% glycerol pH 7.3.

Aliquoting is unnecessary for -20°C storage

For technical support and original validation data for this product please contact:

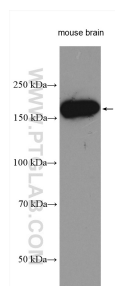
T: 4006900926

E: [Proteintech-CN@ptglab.com](mailto:Proteintech-CN@ptglab.com)

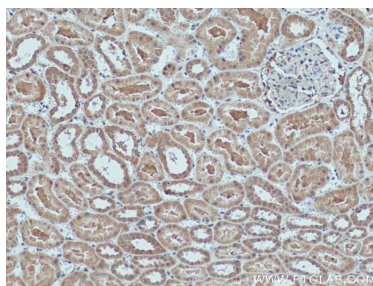
W: [ptgcn.com](http://ptgcn.com)

**This product is exclusively available under Proteintech Group brand and is not available to purchase from any other manufacturer.**

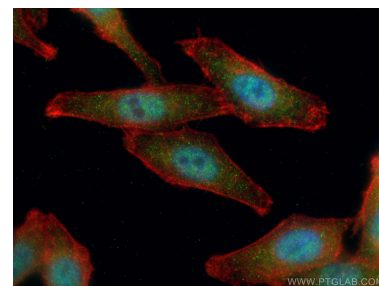
## Selected Validation Data



Mouse brain tissue were subjected to SDS PAGE followed by western blot with 18989-1-AP (GLI2-Specific antibody) at dilution of 1:1000 incubated at room temperature for 1.5 hours.



Immunohistochemical analysis of paraffin-embedded human kidney tissue slide using 18989-1-AP (GLI2-Specific antibody) at dilution of 1:200 (under 10x lens. Heat mediated antigen retrieval with Tris-EDTA buffer (pH 9.0).



Immunofluorescent analysis of (4% PFA) fixed HepG2 cells using 18989-1-AP (GLI2-Specific antibody), at dilution of 1:200 and Coralite® 488-Conjugated AffiniPure Goat Anti-Rabbit IgG(H+L).