

For Research Use Only

DOCK9 Polyclonal antibody

Catalog Number: 18987-1-AP

1 Publications



Basic Information

Catalog Number:

18987-1-AP

Size:

700 ug/ml

Source:

Rabbit

Isotype:

IgG

GenBank Accession Number:

NM_015296

GeneID (NCBI):

23348

UNIPROT ID:

Q9BZ29

Full Name:

dedicator of cytokinesis 9

Calculated MW:

239 kDa

Observed MW:

200-236 kDa

Purification Method:

Antigen affinity purification

Recommended Dilutions:

WB 1:500-1:1000

IP 0.5-4.0 ug for 1.0-3.0 mg of total protein lysate

IHC 1:50-1:500

IF/ICC 1:200-1:800

Applications

Tested Applications:

WB, IHC, IF/ICC, IP, ELISA

Cited Applications:

WB

Species Specificity:

human, mouse

Cited Species:

human

Note-IHC: suggested antigen retrieval with TE buffer pH 9.0; (*) Alternatively, antigen retrieval may be performed with citrate buffer pH 6.0

Positive Controls:

WB: A549 cells, human brain tissue, mouse brain tissue, human heart tissue, human placenta tissue, HeLa cells, MCF-7 cells

IP: mouse brain tissue,

IHC: human kidney tissue, human heart tissue

IF/ICC: HeLa cells,

Background Information

DOCK9 is a guanine nucleotide exchange factor (GEF) that activates CDC42 by exchanging bound GDP for free GTP. Its overexpression induces filopodia formation.

Notable Publications

Author	Pubmed ID	Journal	Application
Chiara Galloni	38762624	Commun Biol	WB

Storage

Storage:

Store at -20°C. Stable for one year after shipment.

Storage Buffer:

PBS with 0.02% sodium azide and 50% glycerol pH 7.3.

Aliquoting is unnecessary for -20°C storage

For technical support and original validation data for this product please contact:

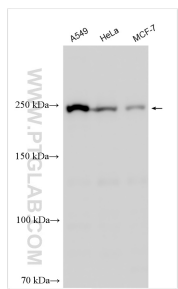
T: 4006900926

E: Proteintech-CN@ptglab.com

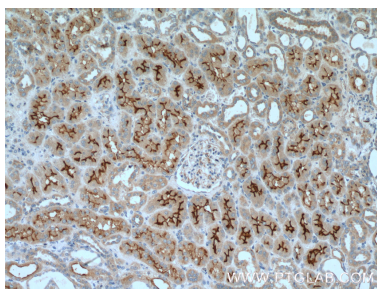
W: ptgcn.com

This product is exclusively available under Proteintech Group brand and is not available to purchase from any other manufacturer.

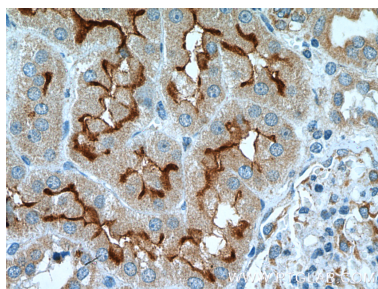
Selected Validation Data



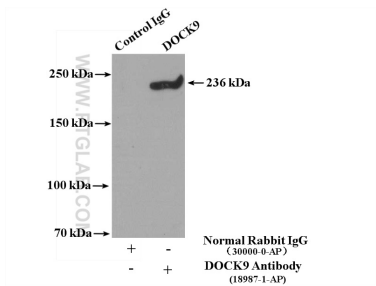
Various lysates were subjected to SDS PAGE followed by western blot with 18987-1-AP (DOCK9 antibody) at dilution of 1:500 incubated at room temperature for 1.5 hours.



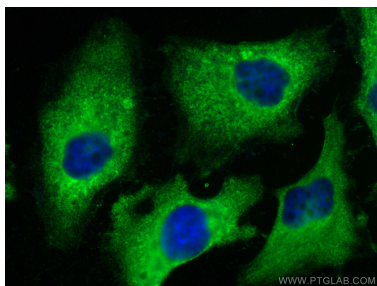
Immunohistochemical analysis of paraffin-embedded human kidney tissue slide using 18987-1-AP (DOCK9 Antibody) at dilution of 1:200 (under 10x lens).



Immunohistochemical analysis of paraffin-embedded human kidney tissue slide using 18987-1-AP (DOCK9 Antibody) at dilution of 1:200 (under 40x lens).



IP result of anti-DOCK9 (IP:18987-1-AP, 4ug; Detection:18987-1-AP 1:800) with mouse brain tissue lysate 4000ug.



Immunofluorescent analysis of (-20°C Methanol) fixed HeLa cells using DOCK9 antibody (18987-1-AP) at dilution of 1:400 and CoraLite®488-Conjugated AffiniPure Goat Anti-Rabbit IgG(H+L) (SA00013-2).