

For Research Use Only

SH3PXD2A Polyclonal antibody

Catalog Number: 18976-1-AP

Featured Product

14 Publications



Basic Information

Catalog Number:

18976-1-AP

Size:

350 µg/ml

Source:

Rabbit

Isotype:

IgG

GenBank Accession Number:

NM_014631

GeneID (NCBI):

9644

UNIPROT ID:

Q5TCZ1

Full Name:

SH3 and PX domains 2A

Calculated MW:

125 kDa

Observed MW:

140-150 kDa

Purification Method:

Antigen affinity purification

Recommended Dilutions:

WB 1:500-1:1000

IHC 1:20-1:200

IF 1:10-1:100

Applications

Tested Applications:

WB, IF/ICC, IHC, ELISA

Cited Applications:

WB, IF, IHC, CoIP

Species Specificity:

human, mouse, rat

Cited Species:

human, mouse

Note-IHC: suggested antigen retrieval with TE buffer pH 9.0; (*) Alternatively, antigen retrieval may be performed with citrate buffer pH 6.0

Positive Controls:

WB : HeLa cells, HepG2 cells

IHC : human breast cancer tissue,

IF : HepG2 cells,

Background Information

SH3PXD2A is also named as FISH, KIAA0418, SH3MD1, TKS5. SH3PXD2A contains an amino-terminal PX domain followed by five SH3 domains. It is a cytoplasmic protein in normal fibroblasts (PMID: 19464300). The p140 and p130 forms of SH3PXD2A may be generated by other splice variations. The complexity of SH3PXD2A isoforms is also evident in different cell types. For example in human platelets a single band of 150 kDa was detected, whereas all three forms were found in human fibroblasts and vascular smooth muscle cells (PMID: 9687503). This antibody is specific to SH3PXD2A.

Notable Publications

Author	Pubmed ID	Journal	Application
Shinji Iizuka	27802184	Oncotarget	WB
Shu-Chen Liu	30504771	Nat Commun	WB
Koroku Kato	36471888	J Oncol	WB,IHC,IF

Storage

Storage:

Store at -20°C. Stable for one year after shipment.

Storage Buffer:

PBS with 0.02% sodium azide and 50% glycerol pH 7.3.

Aliquoting is unnecessary for -20°C storage

For technical support and original validation data for this product please contact:

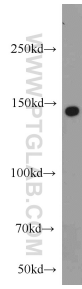
T: 4006900926

E: Proteintech-CN@ptglab.com

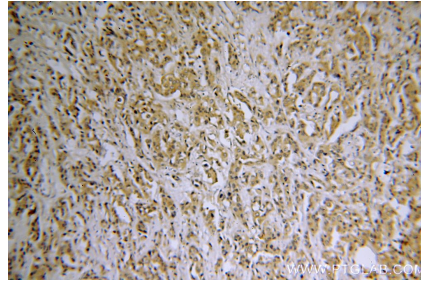
W: ptgcn.com

This product is exclusively available under Proteintech Group brand and is not available to purchase from any other manufacturer.

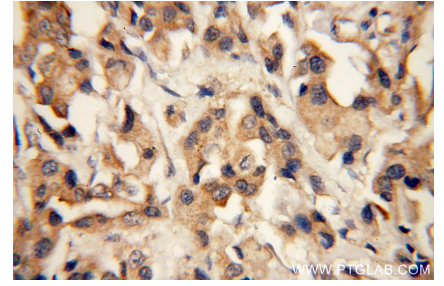
Selected Validation Data



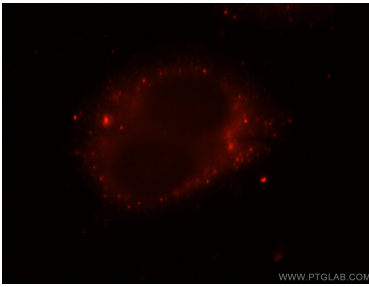
HeLa cells were subjected to SDS PAGE followed by western blot with 18976-1-AP (SH3PXD2A antibody) at dilution of 1:500 incubated at room temperature for 1.5 hours.



Immunohistochemical analysis of paraffin-embedded human breast cancer using 18976-1-AP (SH3PXD2A antibody) at dilution of 1:50 (under 10x lens).



Immunohistochemical analysis of paraffin-embedded human breast cancer using 18976-1-AP (SH3PXD2A antibody) at dilution of 1:50 (under 40x lens).



Immunofluorescent analysis of HepG2 cells using 18976-1-AP (SH3PXD2A antibody) at dilution of 1:25 and Rhodamine-Goat anti-Rabbit IgG.