

For Research Use Only

CRMP4 Polyclonal antibody

Catalog Number: 18969-1-AP

2 Publications



Basic Information

Catalog Number:

18969-1-AP

Concentration:

600 ug/ml

Source:

Rabbit

Isotype:

IgG

Immunogen Catalog Number:

AG5299

GenBank Accession Number:

BC039006

GeneID (NCBI):

1809

UNIPROT ID:

Q14195

Full Name:

dihydropyrimidinase-like 3

Calculated MW:

570 aa, 62 kDa

Observed MW:

60-70 kDa

Purification Method:

Antigen affinity purification

Recommended Dilutions:

WB 1:500-1:3000

IP 0.5-4.0 ug for 1.0-3.0 mg of total protein lysate

IHC 1:100-1:400

IF/ICC 1:50-1:500

Applications

Tested Applications:

WB, IHC, IF/ICC, IP, ELISA

Cited Applications:

WB, IP

Species Specificity:

human, mouse, rat

Cited Species:

mouse, rat

Positive Controls:

WB : SH-SY5Y cells, Jurkat cells, mouse cerebellum tissue, mouse thymus tissue

IP : SH-SY5Y cells,

IHC : human liver cancer tissue, human kidney tissue

IF/ICC : HepG2 cells,

Note-IHC: suggested antigen retrieval with *TE buffer pH 9.0*; (*) Alternatively, antigen retrieval may be performed with *citrate buffer pH 6.0*

Background Information

DPYSL3(Dihydropyrimidinase-related protein 3) is also named as CRMP4, DRP3, ULIP, ULIP1 and belongs to the hydantoinase/dihydropyrimidinase subfamily. DPYSL3 is a developmentally regulated protein, strongly expressed in early embryonic post-mitotic neural cells, reaching a peak of expression around the first post-natal week. In the adult brain, DPYSL3 is present mainly in regions that retain neurogenesis. DPYSL3 protein is also found in synaptic sites at the adult neuromuscular junction where it may be involved in the maintenance of neuronal stability(PMID: 16135096). It has 2 isoforms produced by alternative splicing.

Notable Publications

Author	Pubmed ID	Journal	Application
Jeremy A Whitson	28951044	Free Radic Biol Med	WB
Kazuhiro Tokuda	26071357	Biochem Biophys Res Commun	WB, IP

Storage

Storage:

Store at -20°C. Stable for one year after shipment.

Storage Buffer:

PBS with 0.02% sodium azide and 50% glycerol pH 7.3.

Aliquoting is unnecessary for -20°C storage

For technical support and original validation data for this product please contact:

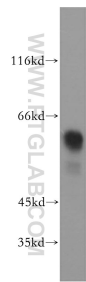
T: 4006900926

E: Proteintech-CN@ptglab.com

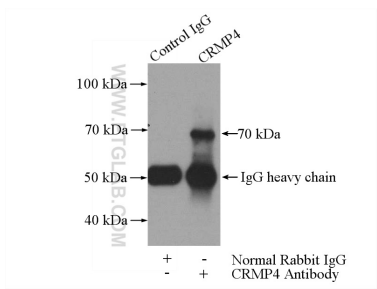
W: ptgcn.com

This product is exclusively available under Proteintech Group brand and is not available to purchase from any other manufacturer.

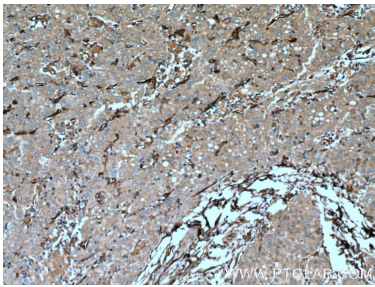
Selected Validation Data



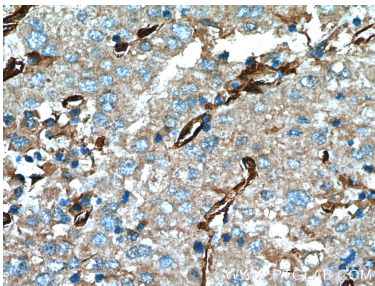
SH-SY5Y cells were subjected to SDS PAGE followed by western blot with 18969-1-AP (CRMP4 antibody) at dilution of 1:800 incubated at room temperature for 1.5 hours.



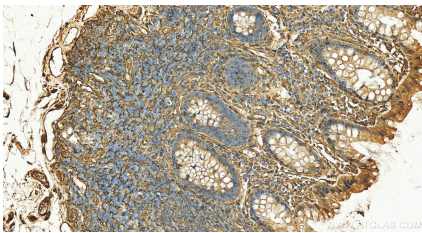
IP result of anti-CRMP4 (IP:18969-1-AP, 3ug; Detection:18969-1-AP 1:700) with SH-SY5Y cells lysate 3000ug.



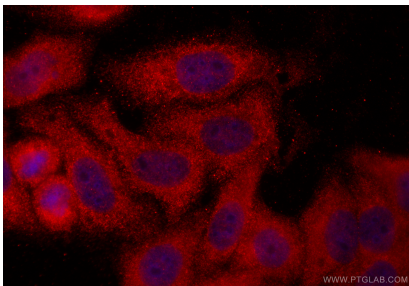
Immunohistochemical analysis of paraffin-embedded human liver cancer tissue slide using 18969-1-AP (CRMP4 antibody at dilution of 1:200 (under 10x lens). Heat mediated antigen retrieval with Tris-EDTA buffer (pH 9.0).



Immunohistochemical analysis of paraffin-embedded human liver cancer tissue slide using 18969-1-AP (CRMP4 antibody at dilution of 1:200 (under 40x lens). Heat mediated antigen retrieval with Tris-EDTA buffer (pH 9.0).



Immunohistochemical analysis of paraffin-embedded human normal colon slide using 18969-1-AP (CRMP4 antibody) at dilution of 1:300 (under 20x lens). Heat mediated antigen retrieval with Tris-EDTA buffer (pH 9.0).



Immunofluorescent analysis of (-20°C Ethanol) fixed HepG2 cells using CRMP4 antibody (18969-1-AP) at dilution of 1:200 and CoraLite®594-Conjugated Goat Anti-Rabbit IgG(H+L) (SA00013-4).