

For Research Use Only

KIR2DL3 Polyclonal antibody

Catalog Number: 18966-1-AP



Basic Information

Catalog Number: 18966-1-AP	GenBank Accession Number: BC032422	Purification Method: Antigen affinity purification
Size: 400 µg/ml	GeneID (NCBI): 3804	Recommended Dilutions: WB 1:500-1:1000
Source: Rabbit	UNIPROT ID: P43628	
Isotype: IgG	Full Name: killer cell immunoglobulin-like receptor, two domains, long cytoplasmic tail, 3	
Immunogen Catalog Number: AG5163	Calculated MW: 341 aa, 38 kDa	
	Observed MW: 58 kDa	

Applications

Tested Applications: WB, ELISA	Positive Controls: WB : human liver tissue,
Species Specificity: human	

Background Information

Killer cell immunoglobulin-like receptors (KIRs) are a diverse family of inhibitory and activating receptors expressed on NK cells and a subset of T cells (PMID: 11861603). These polymorphic receptors interact with specific motifs on HLA class I molecules, modulate NK cytolytic activity and are encoded by genes located on chromosome 19q13.4 (PMID: 17069649). KIR2DL3, also known as CD158B2 or NKAT2, is an inhibitory receptor that is specific for HLA-C alleles (HLA-Cw1, HLA-Cw3 and HLA-Cw7) (PMID: 10196125). It is a 341-amino acid transmembrane glycoprotein consisting of an extracellular region containing two C2-type Ig-like domains, a 19-amino acid hydrophobic transmembrane region, and a long cytoplasmic tail with two immunoreceptor tyrosine-based inhibitory motifs (ITIMs). KIR2DL3 inhibits the cytolytic activity of NK cells thus preventing cell lysis (PMID: 7724594).

Storage

Storage:
Store at -20°C. Stable for one year after shipment.
Storage Buffer:
PBS with 0.02% sodium azide and 50% glycerol pH 7.3.
Aliquoting is unnecessary for -20°C storage

For technical support and original validation data for this product please contact:

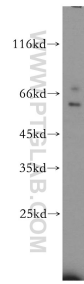
T: 4006900926

E: Proteintech-CN@ptglab.com

W: ptgcn.com

This product is exclusively available under Proteintech Group brand and is not available to purchase from any other manufacturer.

Selected Validation Data



human liver tissue were subjected to SDS PAGE followed by western blot with 18966-1-AP (KIR2DL3 antibody) at dilution of 1:500 incubated at room temperature for 1.5 hours.