

For Research Use Only

# BMP2 Polyclonal antibody

Catalog Number: 18933-1-AP

Featured Product

59 Publications



## Basic Information

Catalog Number:

18933-1-AP

Size:

600 µg/ml

Source:

Rabbit

Isotype:

IgG

Immunogen Catalog Number:

AG13501

GenBank Accession Number:

BC069214

GeneID (NCBI):

650

UNIPROT ID:

P12643

Full Name:

bone morphogenetic protein 2

Calculated MW:

396 aa, 44 kDa

Purification Method:

Antigen affinity purification

Recommended Dilutions:

WB 1:500-1:1000

## Applications

Tested Applications:

WB, ELISA

Cited Applications:

WB, IHC, IF

Species Specificity:

human

Cited Species:

human, mouse, rat, hamster, sheep

Positive Controls:

WB : HeLa cells,

## Background Information

Bone morphogenetic protein-2 (BMP-2) is a member of the transforming growth factor-beta (TGFβ) superfamily. BMP2 is synthesized as a 60 kDa precursor that is processed in the secretory pathway to a small 18 kDa monomer; 2 monomers then associate to form the active 30 kDa homodimer, which binds to its receptor. There is also a 40-45 kDa form of BMP2, as an amino-terminal propeptide. BMP2 can induce bone formation and regeneration during early embryonic development. It is involved in the hedgehog pathway, TGF beta signaling pathway, and cytokine-cytokine receptor interaction.

## Notable Publications

Author	Pubmed ID	Journal	Application
Guangchun Dai	33102476	Front Cell Dev Biol	WB, IHC
Hong Liu	28944996	J Cell Mol Med	WB
Chuanhui Yin	32949110	Birth Defects Res	IHC

## Storage

Storage:

Store at -20°C. Stable for one year after shipment.

Storage Buffer:

PBS with 0.02% sodium azide and 50% glycerol pH 7.3.

Aliquoting is unnecessary for -20°C storage

For technical support and original validation data for this product please contact:

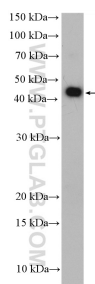
T: 4006900926

E: [Proteintech-CN@ptglab.com](mailto:Proteintech-CN@ptglab.com)

W: [ptgcn.com](http://ptgcn.com)

This product is exclusively available under Proteintech Group brand and is not available to purchase from any other manufacturer.

## Selected Validation Data



HeLa cells were subjected to SDS PAGE followed by western blot with 18933-1-AP (BMP2 antibody) at dilution of 1:600 incubated at room temperature for 1.5 hours.