

For Research Use Only

# SPZ1 Polyclonal antibody

Catalog Number: 18931-1-AP



## Basic Information

<b>Catalog Number:</b> 18931-1-AP	<b>GenBank Accession Number:</b> BC033798	<b>Purification Method:</b> Antigen affinity purification
<b>Size:</b> 500 µg/ml	<b>GeneID (NCBI):</b> 84654	<b>Recommended Dilutions:</b> WB 1:500-1:2000 IHC 1:20-1:200 IF/ICC 1:50-1:500
<b>Source:</b> Rabbit	<b>UNIPROT ID:</b> Q9BXG8	
<b>Isotype:</b> IgG	<b>Full Name:</b> spermatogenic leucine zipper 1	
<b>Immunogen Catalog Number:</b> AG6995	<b>Calculated MW:</b> 430 aa, 49 kDa	
	<b>Observed MW:</b> 49-55 kDa	

## Applications

**Tested Applications:**  
IF/ICC, IHC, WB, ELISA

**Species Specificity:**  
human

**Note-IHC: suggested antigen retrieval with TE buffer pH 9.0; (\*) Alternatively, antigen retrieval may be performed with citrate buffer pH 6.0**

**Positive Controls:**

**WB :** PC-3 cells, DU 145 cells, human testis tissue

**IHC :** human testis tissue, human brain tissue, human kidney tissue, human lung tissue, human ovary tissue, human skin tissue, human spleen tissue

**IF/ICC :** PC-3 cells,

## Background Information

### Storage

**Storage:**  
Store at -20°C. Stable for one year after shipment.  
**Storage Buffer:**  
PBS with 0.02% sodium azide and 50% glycerol pH 7.3.  
Aliquoting is unnecessary for -20°C storage

For technical support and original validation data for this product please contact:

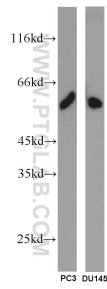
T: 4006900926

E: [Proteintech-CN@ptglab.com](mailto:Proteintech-CN@ptglab.com)

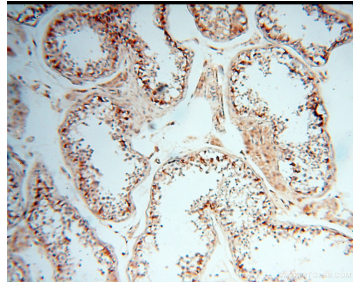
W: [ptgcn.com](http://ptgcn.com)

**This product is exclusively available under Proteintech Group brand and is not available to purchase from any other manufacturer.**

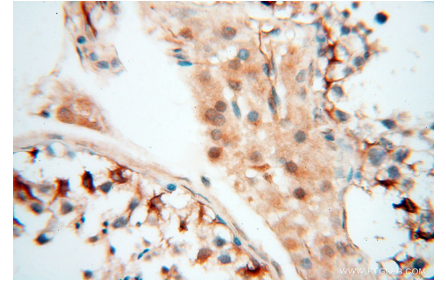
## Selected Validation Data



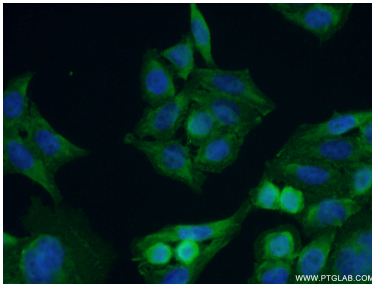
PC-3 cells were subjected to SDS PAGE followed by western blot with 18931-1-AP (SPZ1 antibody) at dilution of 1:1000 incubated at room temperature for 1.5 hours.



Immunohistochemical analysis of paraffin-embedded human testis using 18931-1-AP (SPZ1 antibody) at dilution of 1:100 (under 10x lens).



Immunohistochemical analysis of paraffin-embedded human testis using 18931-1-AP (SPZ1 antibody) at dilution of 1:100 (under 40x lens).



Immunofluorescent analysis of (10% Formaldehyde) fixed PC-3 cells using 18931-1-AP (SPZ1 antibody) at dilution of 1:50 and Alexa Fluor 488-conjugated AffiniPure Goat Anti-Rabbit IgG(H+L).