

For Research Use Only

SOX13 Polyclonal antibody

Catalog Number: 18902-1-AP

Featured Product

5 Publications



Basic Information

Catalog Number:

18902-1-AP

Size:

373 µg/ml

Source:

Rabbit

Isotype:

IgG

Immunogen Catalog Number:

AG13537

GenBank Accession Number:

BC106038

GeneID (NCBI):

9580

UNIPROT ID:

Q9UN79

Full Name:

SRV (sex determining region Y)-box

13

Calculated MW:

622 aa, 69 kDa

Observed MW:

69 kDa

Purification Method:

Antigen affinity purification

Recommended Dilutions:

WB 1:500-1:3000

IP 0.5-4.0 µg for 1.0-3.0 mg of total protein lysate

IF 1:20-1:200

Applications

Tested Applications:

IF/ICC, IP, WB, ELISA

Cited Applications:

WB, IF, IHC, ChIP

Species Specificity:

human

Cited Species:

human, mouse

Positive Controls:

WB : BGC-823 cells, NCI-H1299 cells

IP : SH-SY5Y cells,

IF : HeLa cells,

Background Information

SRV-BOX 13(SOX13), identified a sequence homologous more than 60% to the SRV HMG box, with a centrally located HMG box and an N-terminal leucine zipper motif with a neighboring glutamine stretch called a Q box. SOX13 binds to the consensus HMG-box motif. It's an IDDM-specific human autoantigen, and a gamma-delta-specific gene in the immune system. It can modulate Wnt/TCF activity. This is a rabbit polyclonal raised against part of N-terminal chain of SOX13 of human origin.

Notable Publications

Author	Pubmed ID	Journal	Application
Catherine Demos	36247423	Front Cardiovasc Med	WB,IF
Min Feng	32461589	Lab Invest	WB,IHC
Xiaoyan Jin	35611828	Bioengineered	WB,IHC

Storage

Storage:

Store at -20°C. Stable for one year after shipment.

Storage Buffer:

PBS with 0.02% sodium azide and 50% glycerol pH 7.3.

Aliquoting is unnecessary for -20°C storage

For technical support and original validation data for this product please contact:

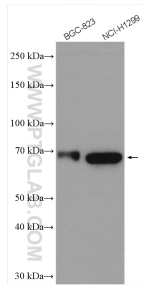
T: 4006900926

E: Proteintech-CN@ptglab.com

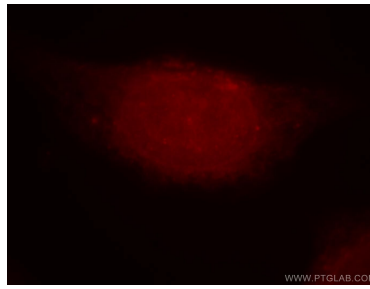
W: ptgcn.com

This product is exclusively available under Proteintech Group brand and is not available to purchase from any other manufacturer.

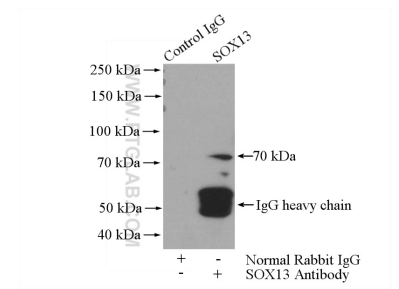
Selected Validation Data



Various lysates were subjected to SDS PAGE followed by western blot with 18902-1-AP (SOX13 antibody) at dilution of 1:1500 incubated at room temperature for 1.5 hours.



Immunofluorescent analysis of HeLa cells, using SOX13 antibody 18902-1-AP at 1:50 dilution and Rhodamine-labeled goat anti-rabbit IgG (red).



IP result of anti-SOX13 (IP:18902-1-AP, 4ug; Detection:18902-1-AP 1:500) with SH-SY5Y cells lysate 1200ug.