

For Research Use Only

CEP170/CEP170L Polyclonal antibody



Catalog Number: 18899-1-AP

Featured Product

4 Publications

Basic Information

Catalog Number:

18899-1-AP

Size:

700 µg/ml

Source:

Rabbit

Isotype:

IgG

Immunogen Catalog Number:

AG13532

GenBank Accession Number:

BC014590

GeneID (NCBI):

645455

Full Name:

centrosomal protein 170kDa-like

Calculated MW:

170 kDa

Observed MW:

170-200 kDa

Purification Method:

Antigen affinity purification

Recommended Dilutions:

WB 1:1000-1:6000

IF/ICC 1:10-1:100

Applications

Tested Applications:

WB, IF/ICC, ELISA

Cited Applications:

WB, IP, IF

Species Specificity:

human, mouse, rat

Cited Species:

human

Positive Controls:

WB : HeLa cells, mouse testis tissue, rat testis tissue

IF/ICC : HeLa cells,

Background Information

CEP170, also named as FAM68A, KAB and KIAA0470, is a fork head-associated (FHA) domain protein. CEP170L is a part of CEP170. The gene CEP170 has some isoforms with MW 170-200 kDa, 160 kDa and some fragments 30-40 kDa, ~75 kDa.

Notable Publications

Author	Pubmed ID	Journal	Application
Xiaozhu Tang	34620840	Signal Transduct Target Ther	WB,IP
Chunyan Gu	34090465	Mol Cancer	WB,IF,IP
Xiaqing Zhang	38590928	Cell Insight	WB,IP

Storage

Storage:

Store at -20°C. Stable for one year after shipment.

Storage Buffer:

PBS with 0.02% sodium azide and 50% glycerol pH 7.3.

Aliquoting is unnecessary for -20°C storage

For technical support and original validation data for this product please contact:

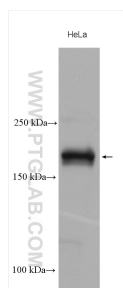
T: 4006900926

E: Proteintech-CN@ptglab.com

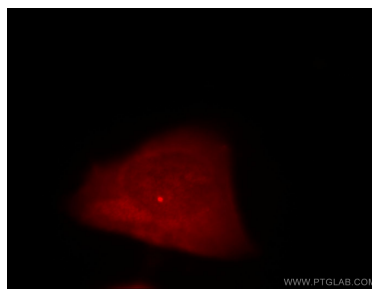
W: ptgcn.com

This product is exclusively available under Proteintech Group brand and is not available to purchase from any other manufacturer.

Selected Validation Data



HeLa cells were subjected to SDS PAGE followed by western blot with 18899-1-AP (CEP170/CEP170L antibody) at dilution of 1:3000 incubated at room temperature for 1.5 hours.



Immunofluorescent analysis of HeLa cells, using CEP170L antibody 18899-1-AP at 1:25 dilution and Rhodamine-labeled goat anti-rabbit IgG (red).