

For Research Use Only

# ADH1C Polyclonal antibody

Catalog Number: 18897-1-AP

4 Publications



## Basic Information

Catalog Number:

18897-1-AP

Concentration:

400 ug/ml

Source:

Rabbit

Isotype:

IgG

Immunogen Catalog Number:

AG13528

GenBank Accession Number:

BC062476

GeneID (NCBI):

126

UNIPROT ID:

P00326

Full Name:

alcohol dehydrogenase 1C (class I),  
gamma polypeptide

Calculated MW:

375 aa, 40 kDa

Observed MW:

37-45 kDa

Purification Method:

Antigen affinity purification

Recommended Dilutions:

WB 1:2000-1:12000

IP 0.5-4.0 ug for 1.0-3.0 mg of total  
protein lysate

IHC 1:500-1:2000

IF/ICC 1:50-1:500

## Applications

Tested Applications:

WB, IHC, IF/ICC, IP, ELISA

Cited Applications:

WB

Species Specificity:

human, mouse, rat

Cited Species:

human, mouse

**Note-IHC: suggested antigen retrieval with  
TE buffer pH 9.0; (\*) Alternatively, antigen  
retrieval may be performed with citrate  
buffer pH 6.0**

Positive Controls:

WB : rat liver tissue,

IP : mouse liver tissue,

IHC : rat liver tissue, human lung cancer tissue, human  
colon tissue, human kidney tissue

IF/ICC : HepG2 cells,

## Background Information

ADH1C (Alcohol dehydrogenase 1C) is also named as ADH3 and belongs to the zinc-containing alcohol dehydrogenase family. It catalyzes the rate-limiting step for ethanol metabolism: the oxidation of alcohol to acetaldehyde. The ADH1C gene is active in intestine and kidney in fetal and early postnatal life, and persists in the stomach and liver in adult life (PMID:4748759).

## Notable Publications

Author	Pubmed ID	Journal	Application
Feifeng Song	34293286	Biochem Pharmacol	WB
Yunhui Xu	34265279	Biochem Pharmacol	WB
Xue Chen	33892114	Free Radic Biol Med	WB

## Storage

Storage:

Store at -20°C. Stable for one year after shipment.

Storage Buffer:

PBS with 0.02% sodium azide and 50% glycerol pH 7.3.

Aliquoting is unnecessary for -20°C storage

For technical support and original validation data for this product please contact:

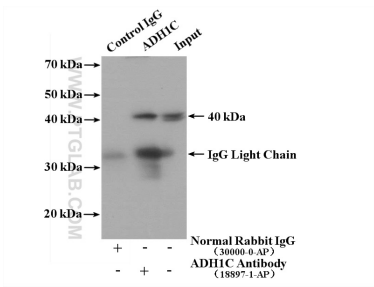
T: 4006900926

E: Proteintech-CN@ptglab.com

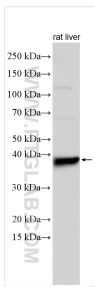
W: ptgcn.com

**This product is exclusively available under Proteintech Group brand and is not available to purchase from any other manufacturer.**

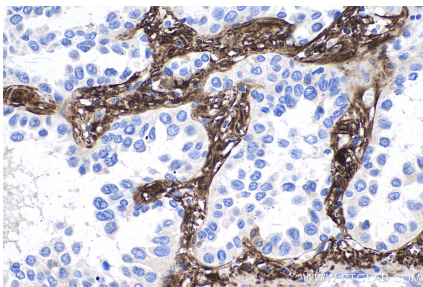
Selected Validation Data



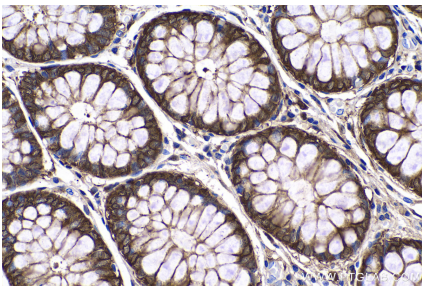
IP result of anti-ADH1C (IP:18897-1-AP, 4ug; Detection:18897-1-AP 1:1000) with mouse liver tissue lysate 4000 ug.



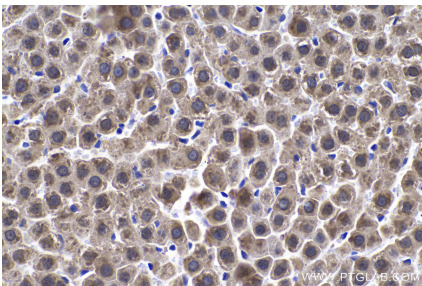
Various lysates were subjected to SDS PAGE followed by western blot with 18897-1-AP (ADH1C antibody) at dilution of 1:6000 incubated at room temperature for 1.5 hours.



Immunohistochemical analysis of paraffin-embedded human lung cancer tissue slide using 18897-1-AP (ADH1C antibody) at dilution of 1:1000 (under 40x lens). Heat mediated antigen retrieval with Tris-EDTA buffer (pH 9.0).



Immunohistochemical analysis of paraffin-embedded human colon tissue slide using 18897-1-AP (ADH1C antibody) at dilution of 1:1000 (under 40x lens). Heat mediated antigen retrieval with Tris-EDTA buffer (pH 9.0).



Immunohistochemical analysis of paraffin-embedded rat liver tissue slide using 18897-1-AP (ADH1C antibody) at dilution of 1:1000 (under 40x lens). Heat mediated antigen retrieval with Tris-EDTA buffer (pH 9.0).



Immunofluorescent analysis of (-20°C Ethanol) fixed HepG2 cells using ADH1C antibody (18897-1-AP) at dilution of 1:200 and CoraLite®488-Conjugated AffiniPure Goat Anti-Rabbit IgG(H+L), CL594-phalloidin (red).